

MAÎTRE D'OUVRAGE  
ARCHITECTES  
DATE

**CODHA** . Coopérative de l'habitat associatif  
**BCR**architectes  
29.03.2022

**IMMEUBLES D'HABITATION CHEMIN DE LA FONTAINE 7 ET PONT-DE-VILLE 20**

# **CHÊNE-BOUGERIES VILLAGE PRESENTATION DU PROJET**

**CONTEXTE URBAIN**

**IMMEUBLE CHEMIN DE LA FONTAINE 7**

**PHILOSOPHIE CONSTRUCTIVE**

**MAISON PONT-DE-VILLE 20**

**CONTEXTE URBAIN**

**IMMEUBLE CHEMIN DE LA FONTAINE 7**

**PHILOSOPHIE CONSTRUCTIVE**

**MAISON PONT-DE-VILLE 20**

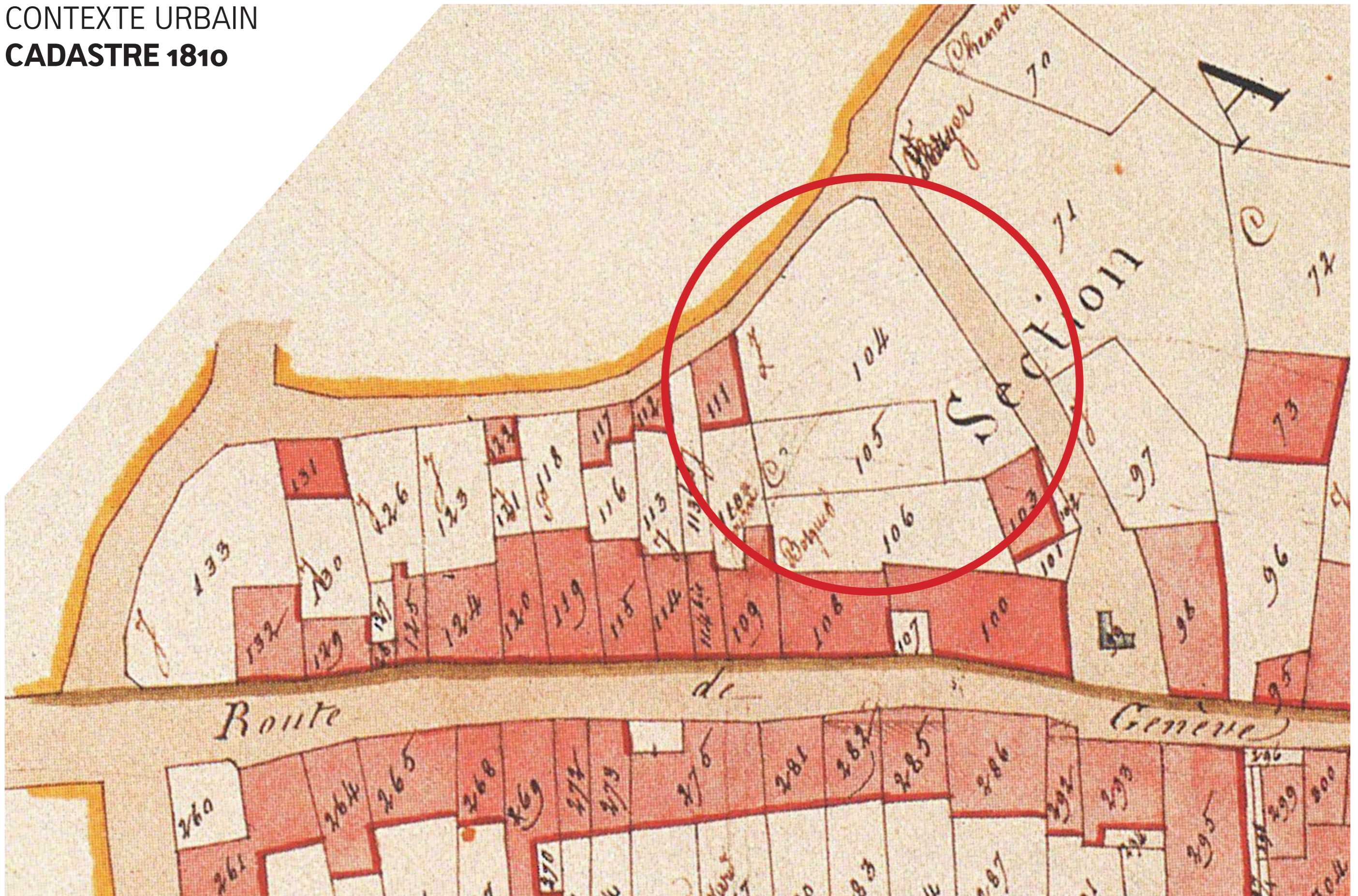


# CONTEXTE URBAIN





CONTEXTE URBAIN  
**CADASTRE 1810**

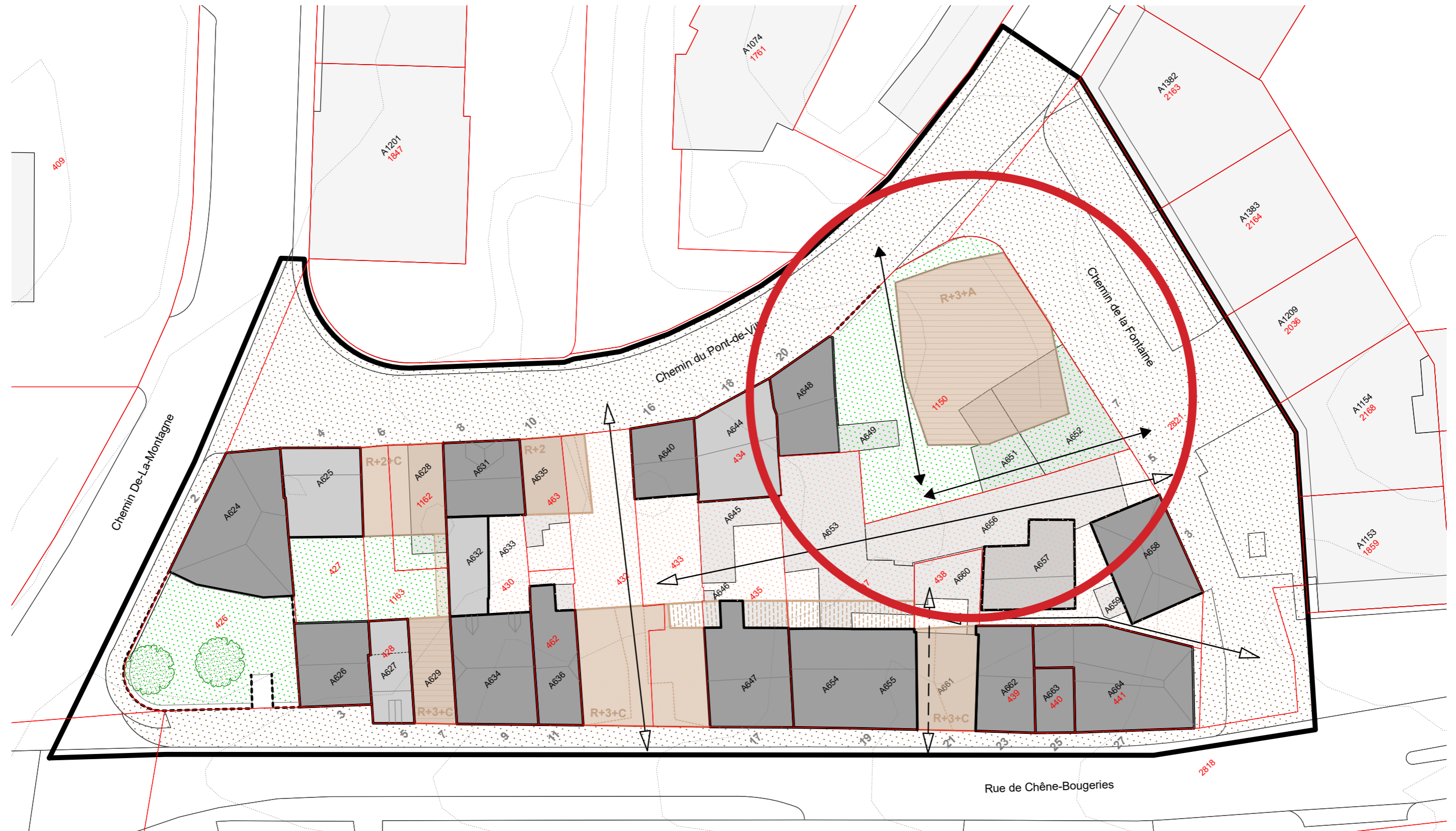




# CONTEXTE URBAIN

## MODIFICATION PARTIELLE DU PLAN DE SITE N°29953

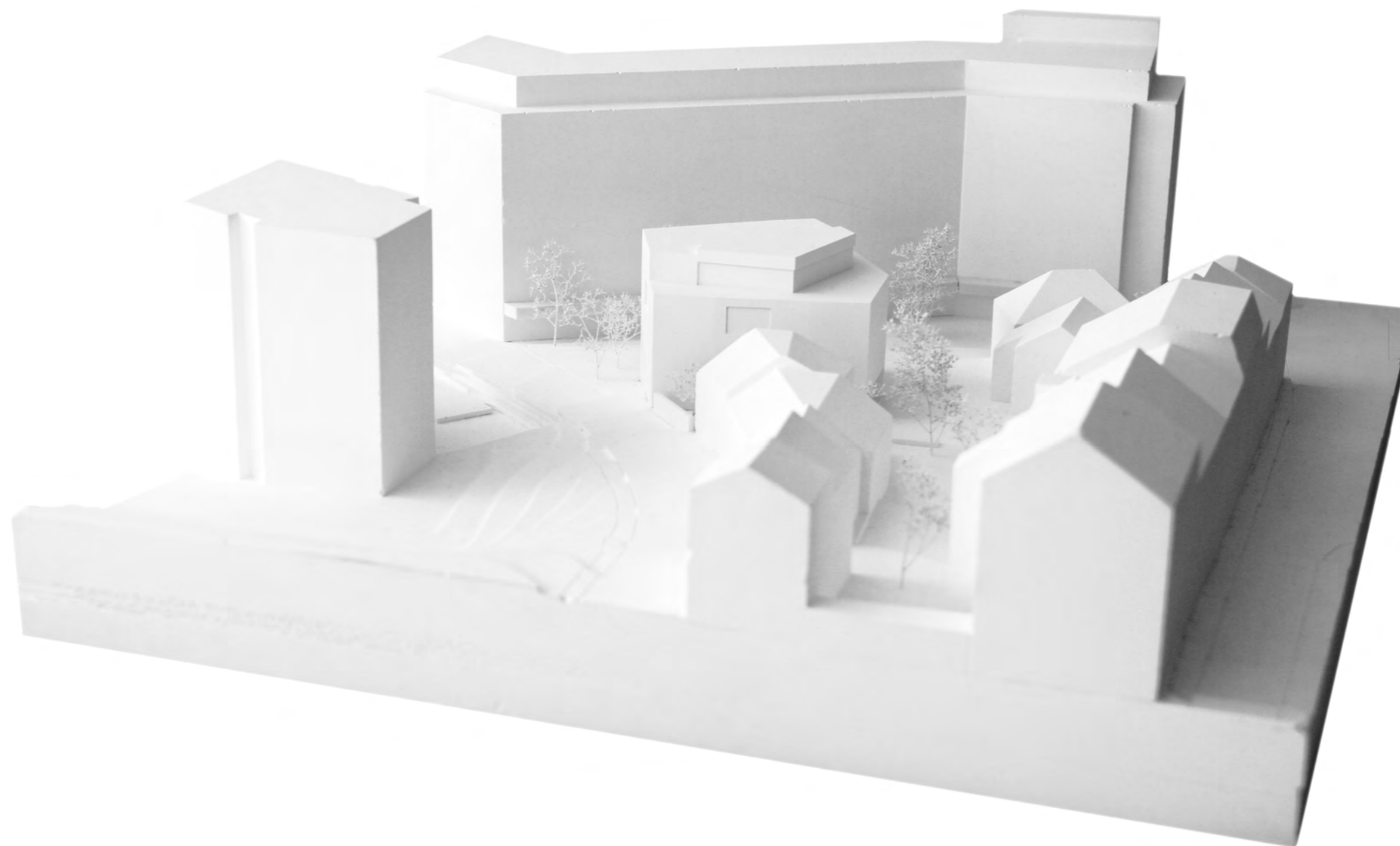
### PLAN DE SITE N° 29953 DU VILLAGE DE CHENE-BOUGERIES, SECTEUR NORD



189c10\_L29\_03.2022



CONTEXTE URBAIN  
**MAQUETTE CONCOURS**

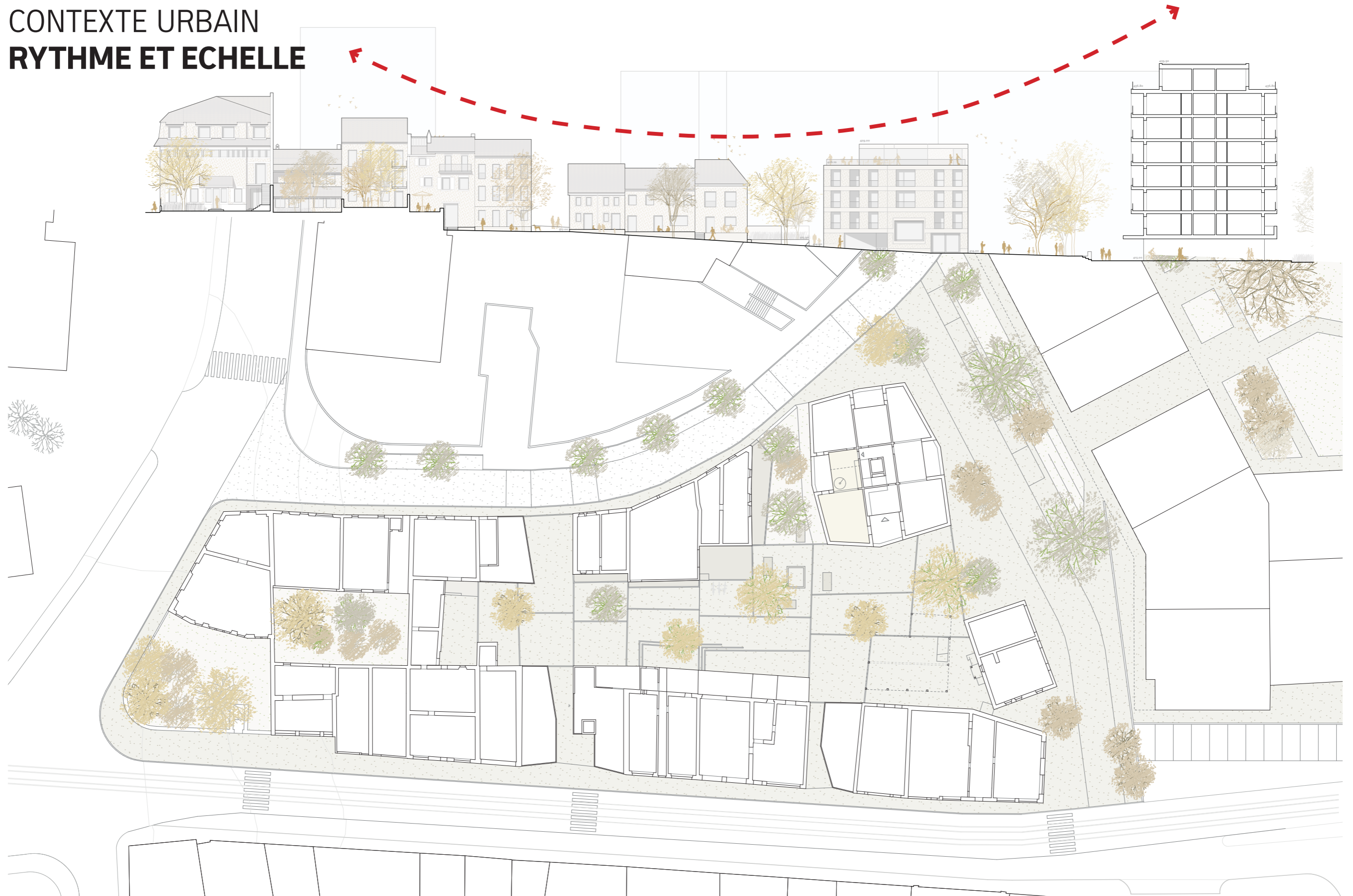


# CONTEXTE URBAIN SITUATION





# CONTEXTE URBAIN RYTHME ET ECHELLE



# CONTEXTE URBAIN

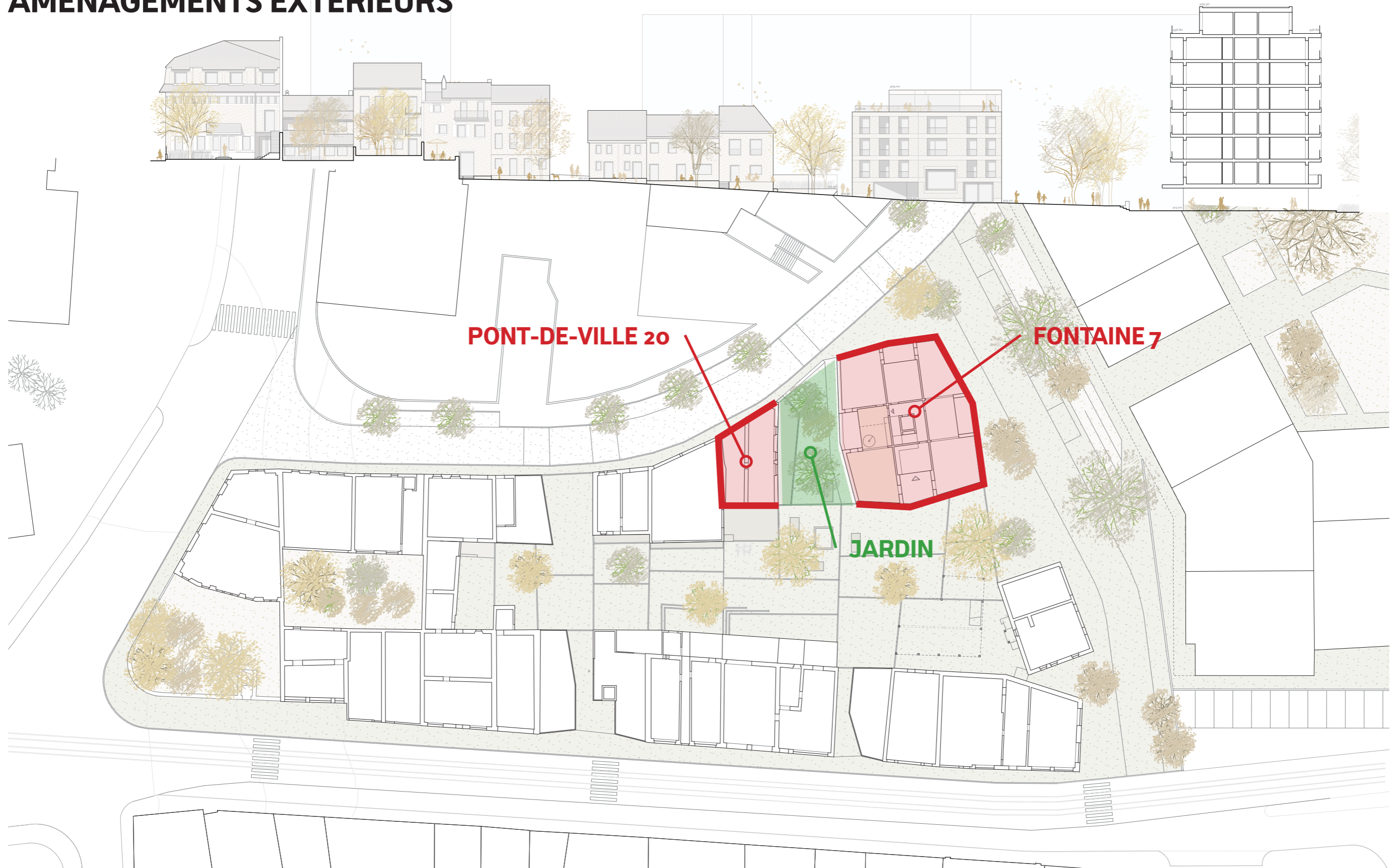
## MOBILITE DOUCE



189c101\_29\_03\_2022



# CONTEXTE URBAIN AMENAGEMENTS EXTERIEURS



CONTEXTE URBAIN  
**MAQUETTE CONCOURS**





**CONTEXTE URBAIN**

**IMMEUBLE CHEMIN DE LA FONTAINE 7**

**PHILOSOPHIE CONSTRUCTIVE**

**MAISON PONT-DE-VILLE 20**



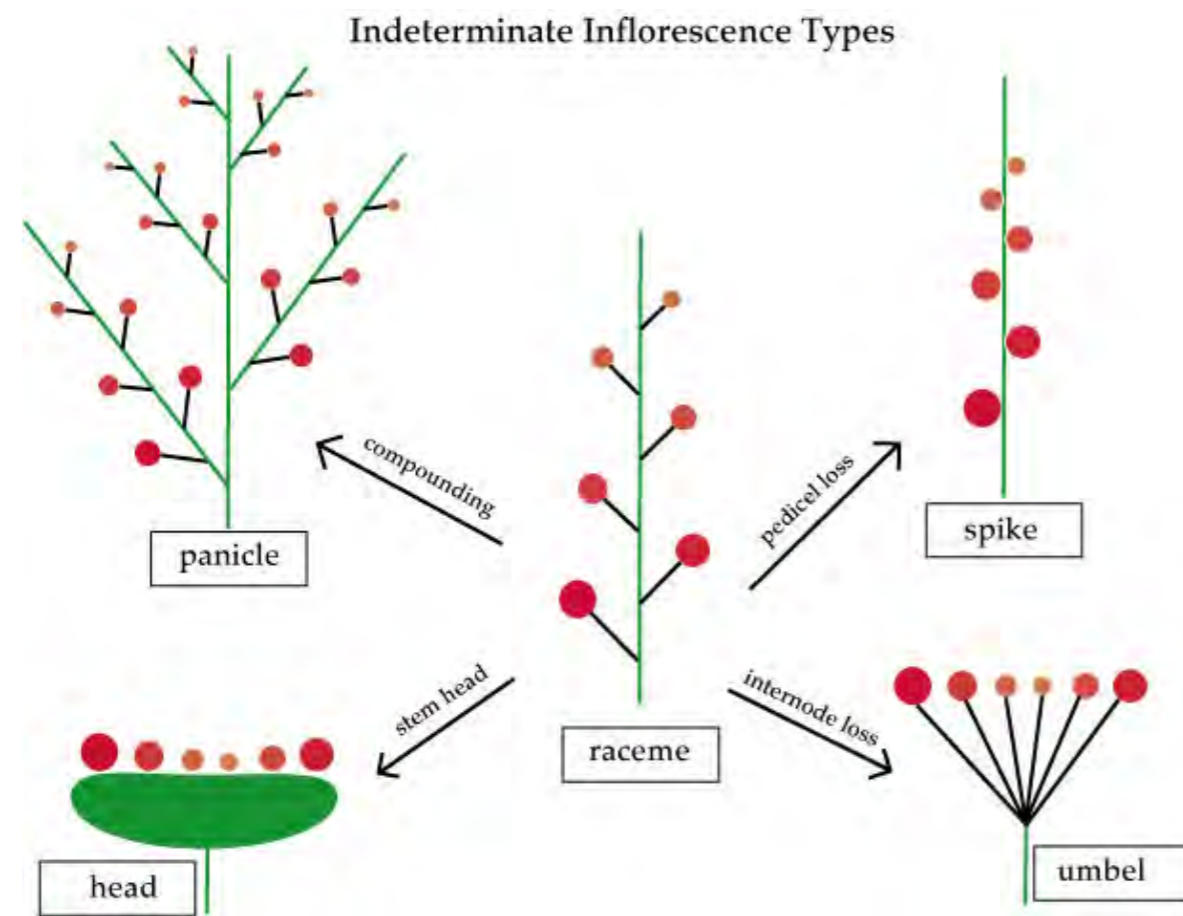
# IMMEUBLE CHEMIN DE LA FONTAINE 7 RACEME - HABITER ENSEMBLE



189c10\_29\_03\_2022

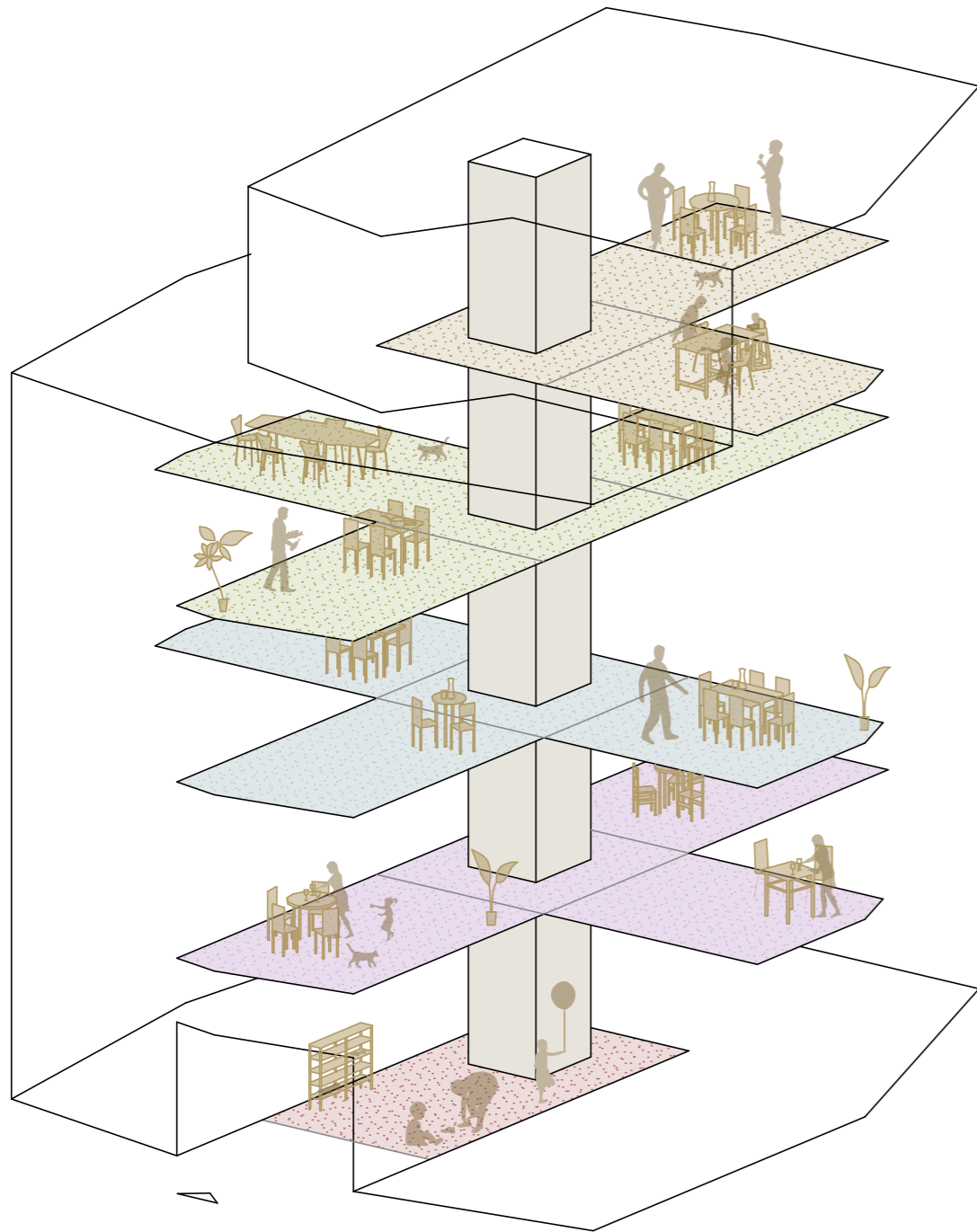


# IMMEUBLE CHEMIN DE LA FONTAINE 7 RACEME - HABITER ENSEMBLE





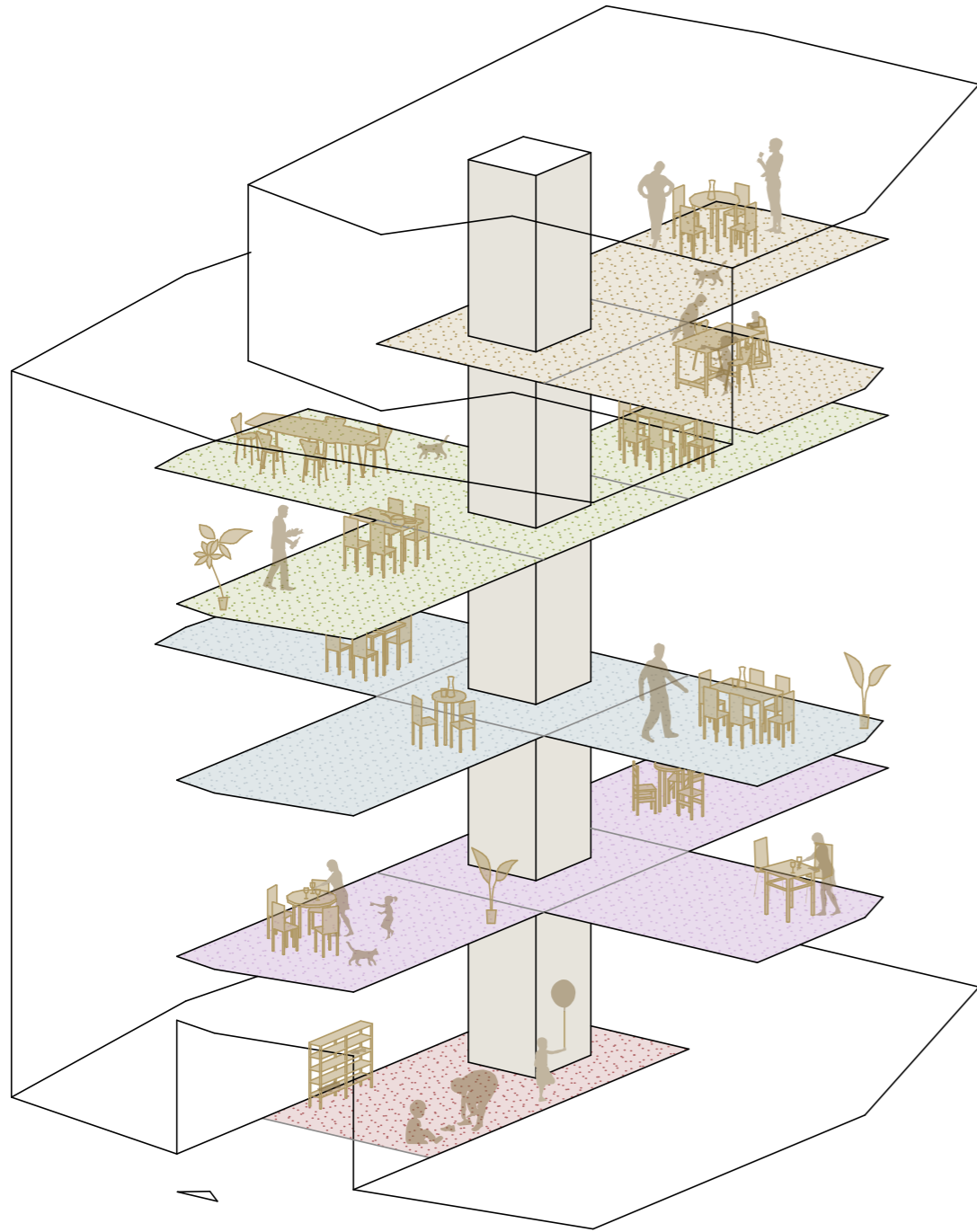
# IMMEUBLE CHEMIN DE LA FONTAINE 7 RACEME - HABITER ENSEMBLE LA MAISON



189c10\_L29\_03\_2022

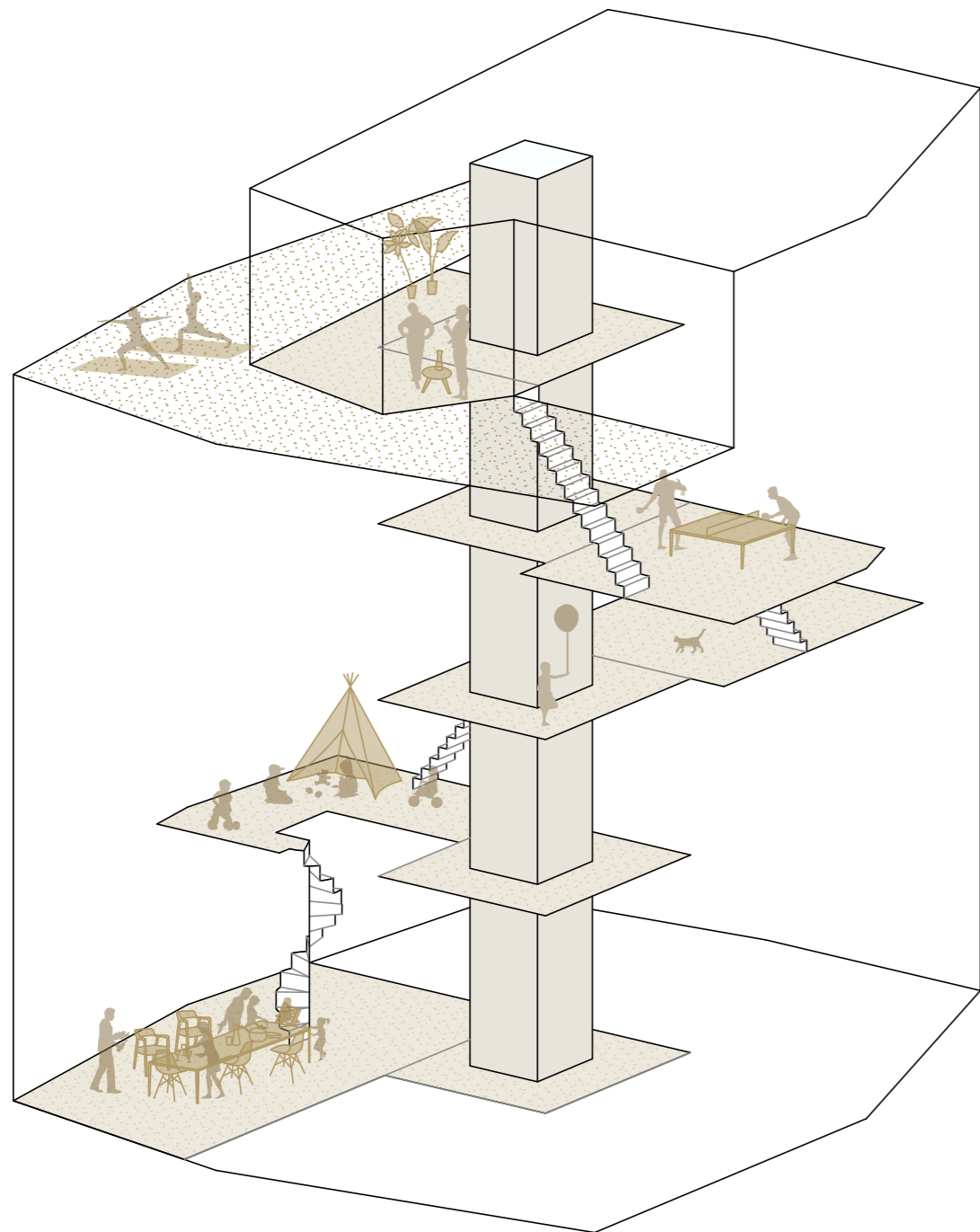


# IMMEUBLE CHEMIN DE LA FONTAINE 7 RACEME - HABITER ENSEMBLE LA MAISON





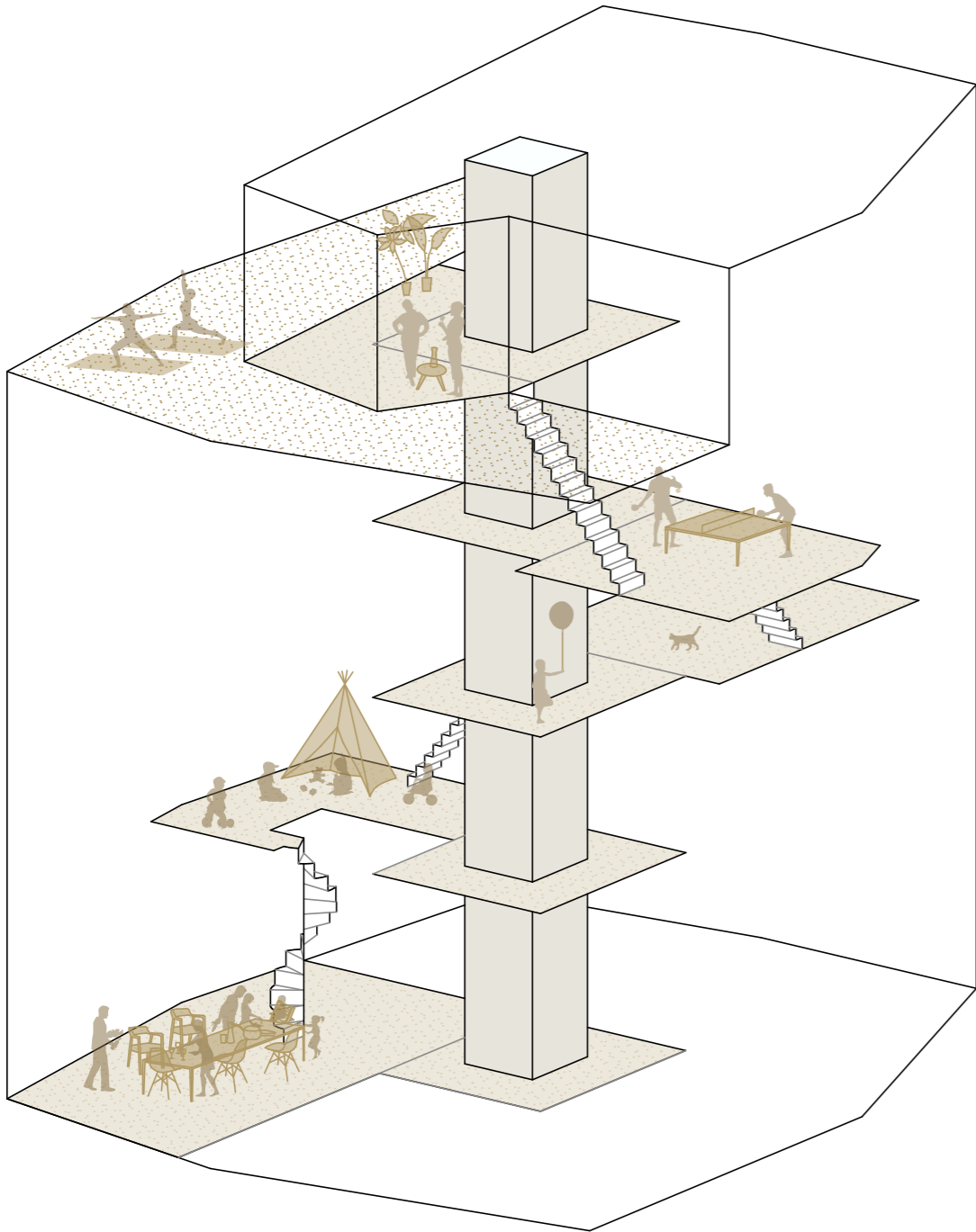
IMMEUBLE CHEMIN DE LA FONTAINE 7  
**RACEME - HABITER ENSEMBLE**  
LE(S) SALON(S)



189c10\_29\_03\_2022

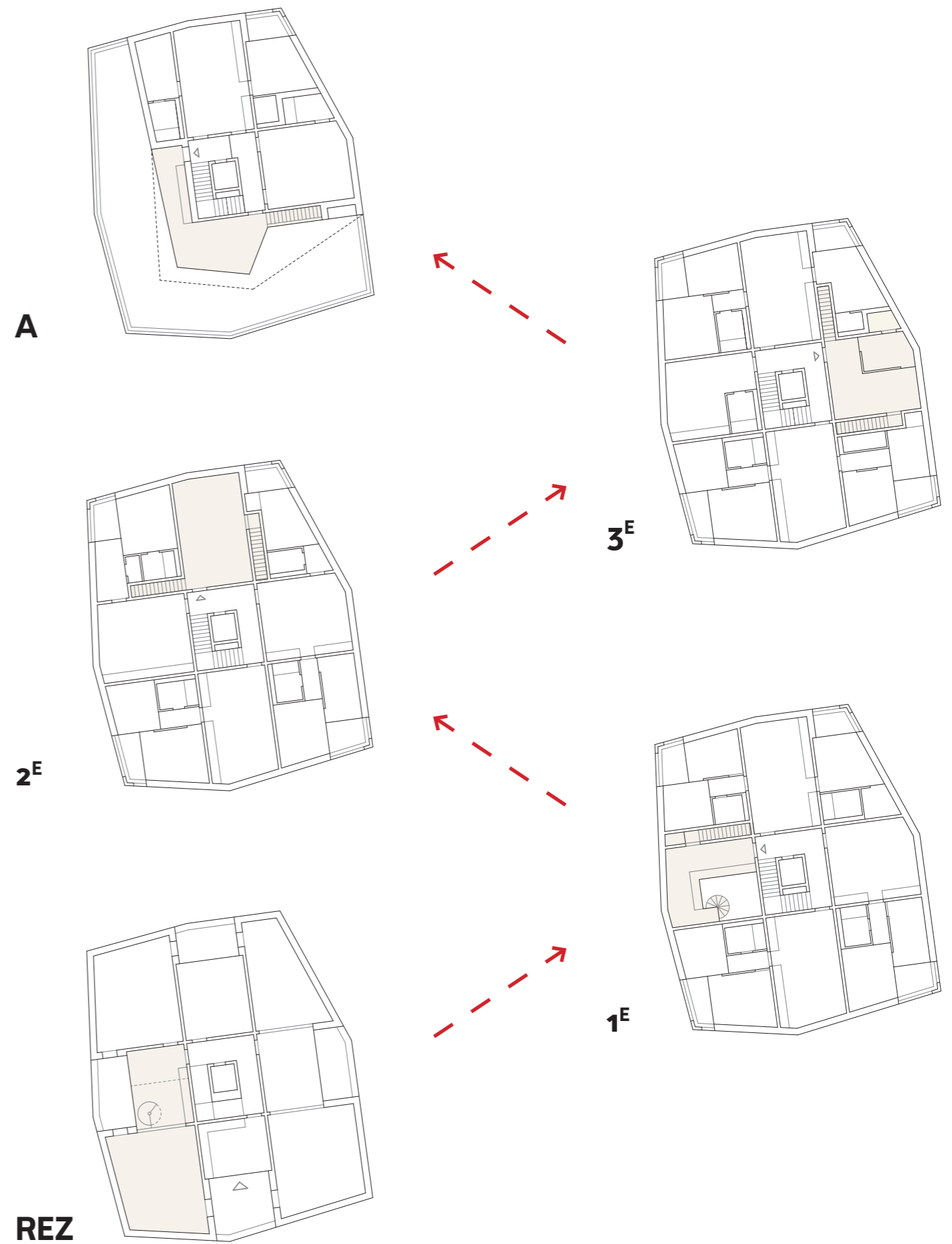
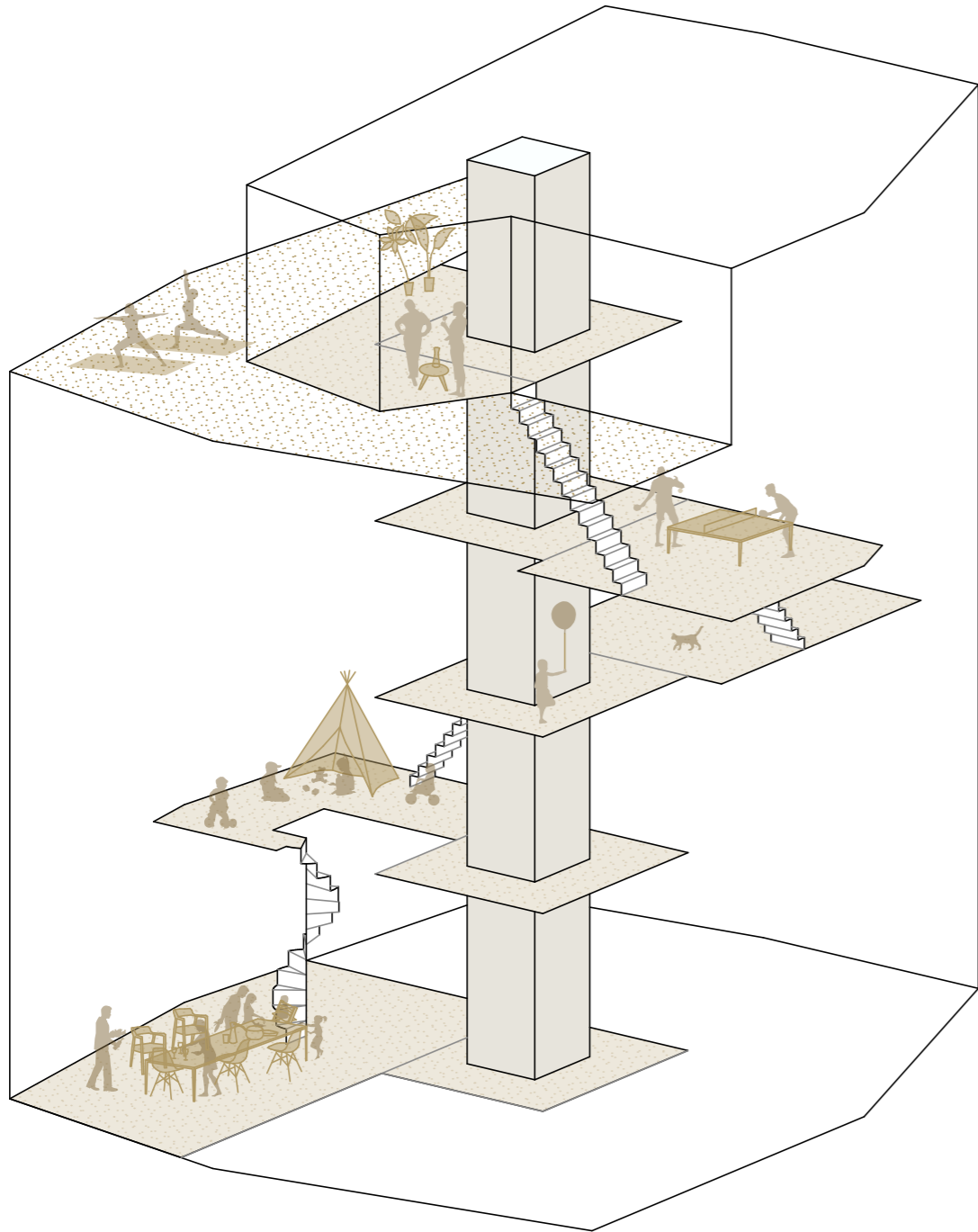


# IMMEUBLE CHEMIN DE LA FONTAINE 7 RACEME - HABITER ENSEMBLE LE(S) SALON(S)





# IMMEUBLE CHEMIN DE LA FONTAINE 7 RACEME - HABITER ENSEMBLE LE(S) SALON(S)



189c10\_29\_03\_2022

# IMMEUBLE CHEMIN DE LA FONTAINE 7

## RACEME - HABITER ENSEMBLE

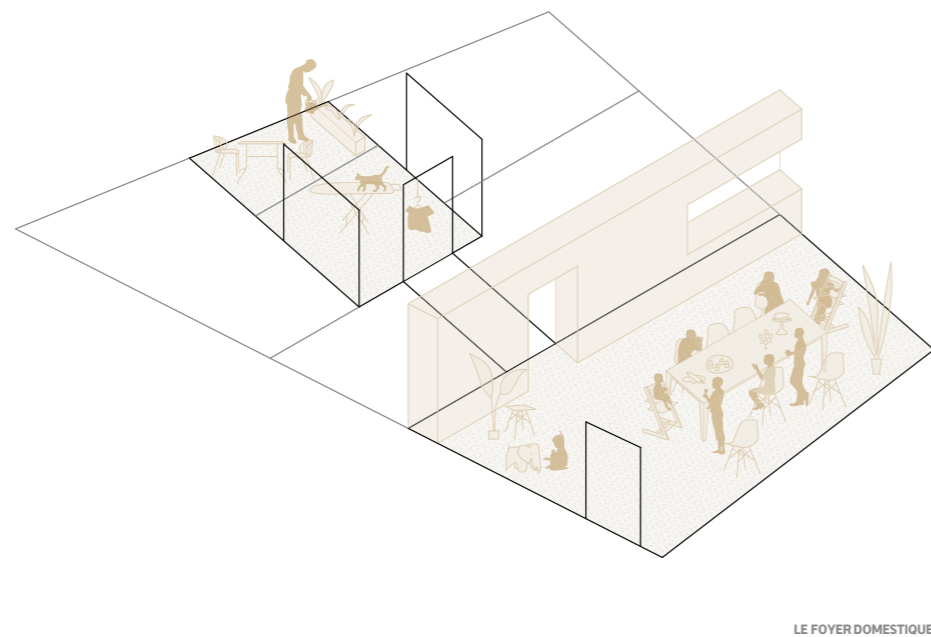
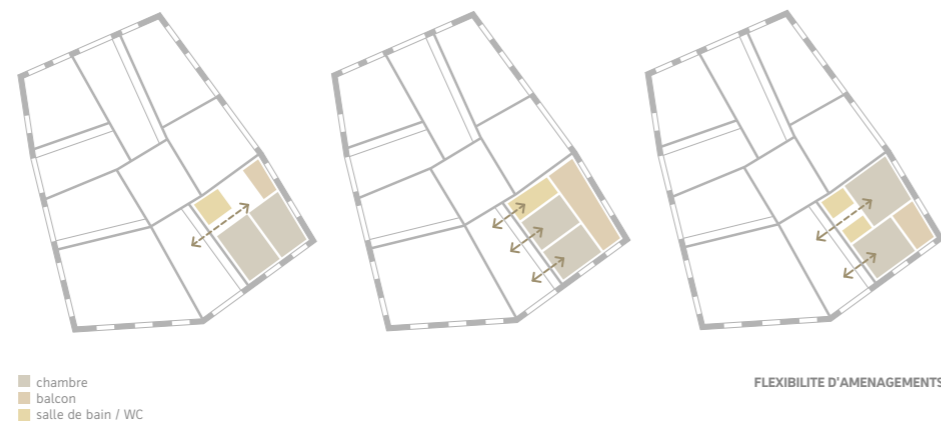
### LE(S) SALON(S)



189c10\_L\_03\_2022



# IMMEUBLE CHEMIN DE LA FONTAINE 7 RACEME - HABITER ENSEMBLE LE FOYER DOMESTIQUE



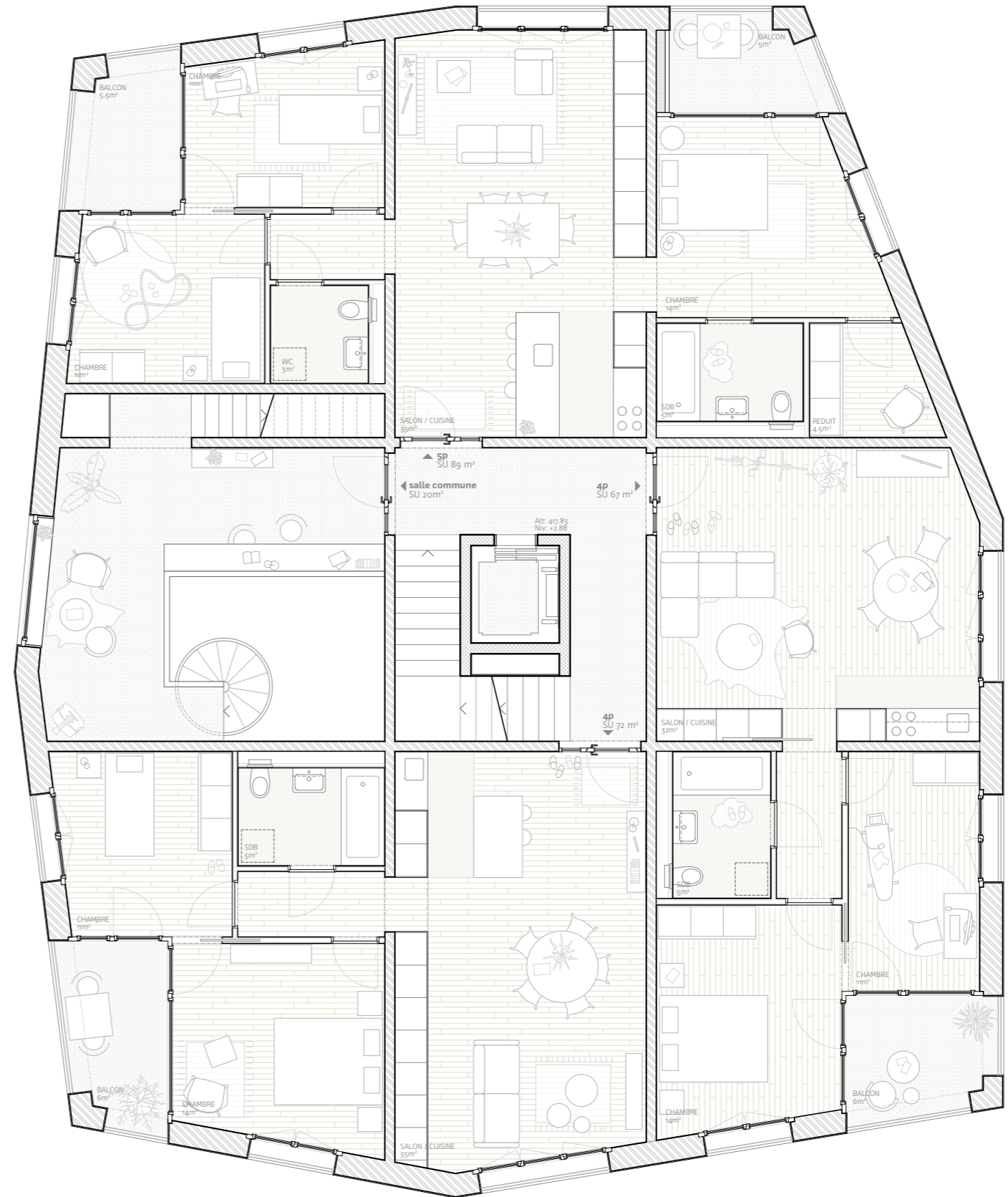
« Ce pari implique de repenser les distributions et la notion d'habitat, avec des logements où l'on pénètre, sans seuil, dans un grand espace à vivre apparenté à la cuisine des habitations rurales. Cette pièce multifonctionnelle, aux nombreux rangements, devient le véritable foyer domestique et donne accès aux espaces plus intimes.»



# IMMEUBLE CHEMIN DE LA FONTAINE 7

## RACEME - HABITER ENSEMBLE

### 1<sup>ER</sup> ETAGE



189c10\_L29\_03\_2022

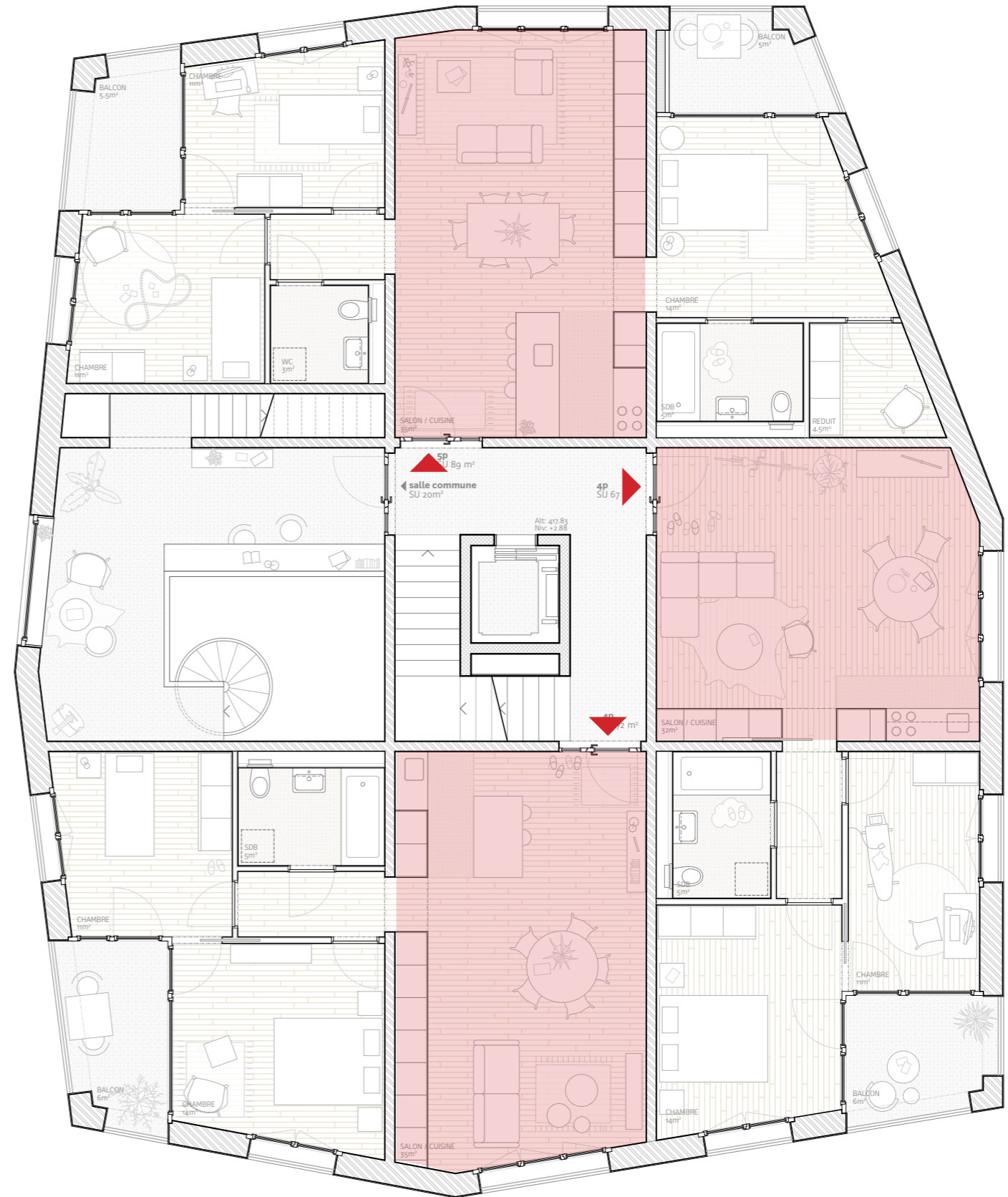


# IMMEUBLE CHEMIN DE LA FONTAINE 7

## RACEME - HABITER ENSEMBLE

### 1<sup>ER</sup> ETAGE

**ESPACE DE JOUR**





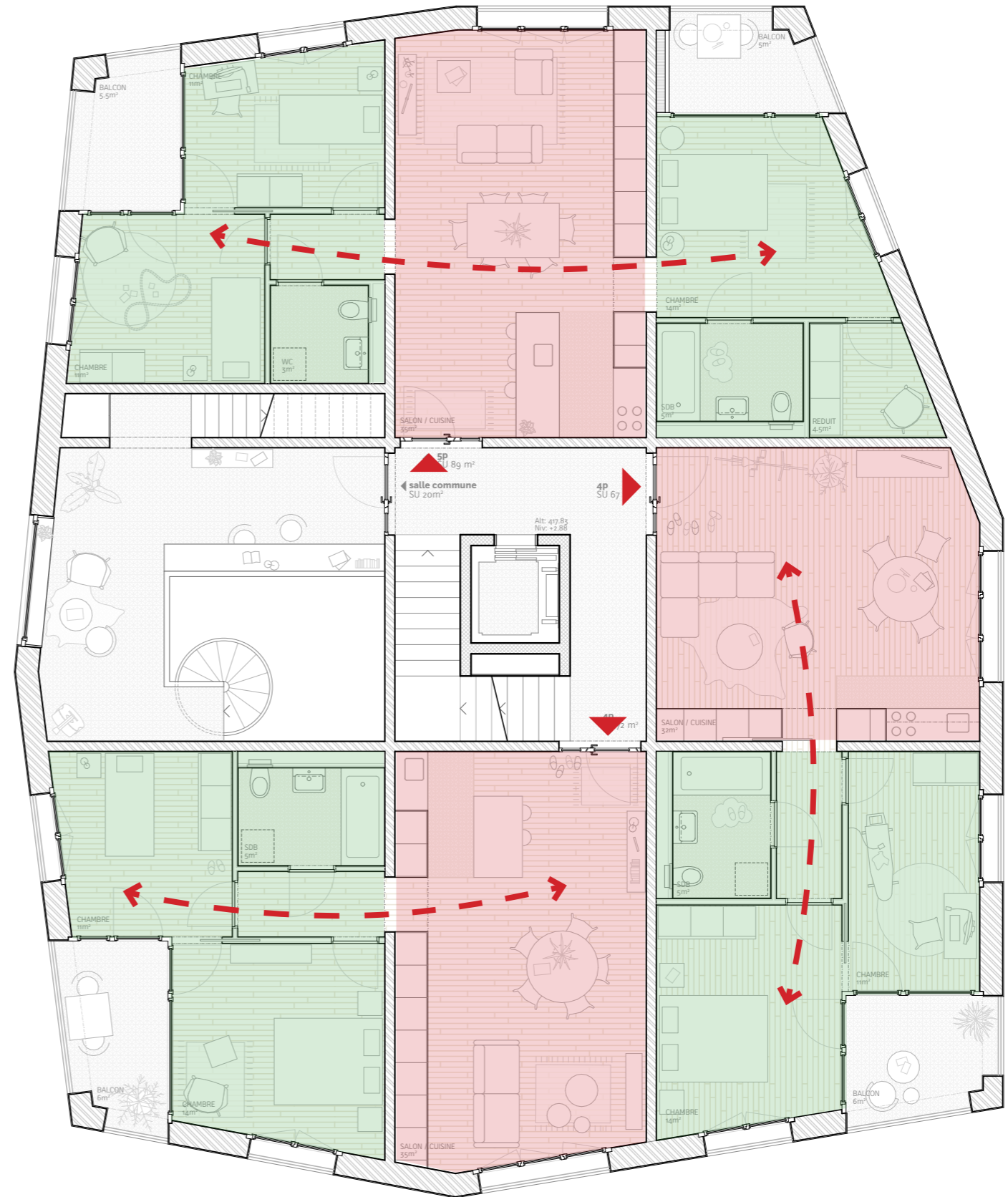
# IMMEUBLE CHEMIN DE LA FONTAINE 7

## RACEME - HABITER ENSEMBLE

### 1<sup>ER</sup> ETAGE

**ESPACE DE JOUR**

**ESPACE DE NUIT**



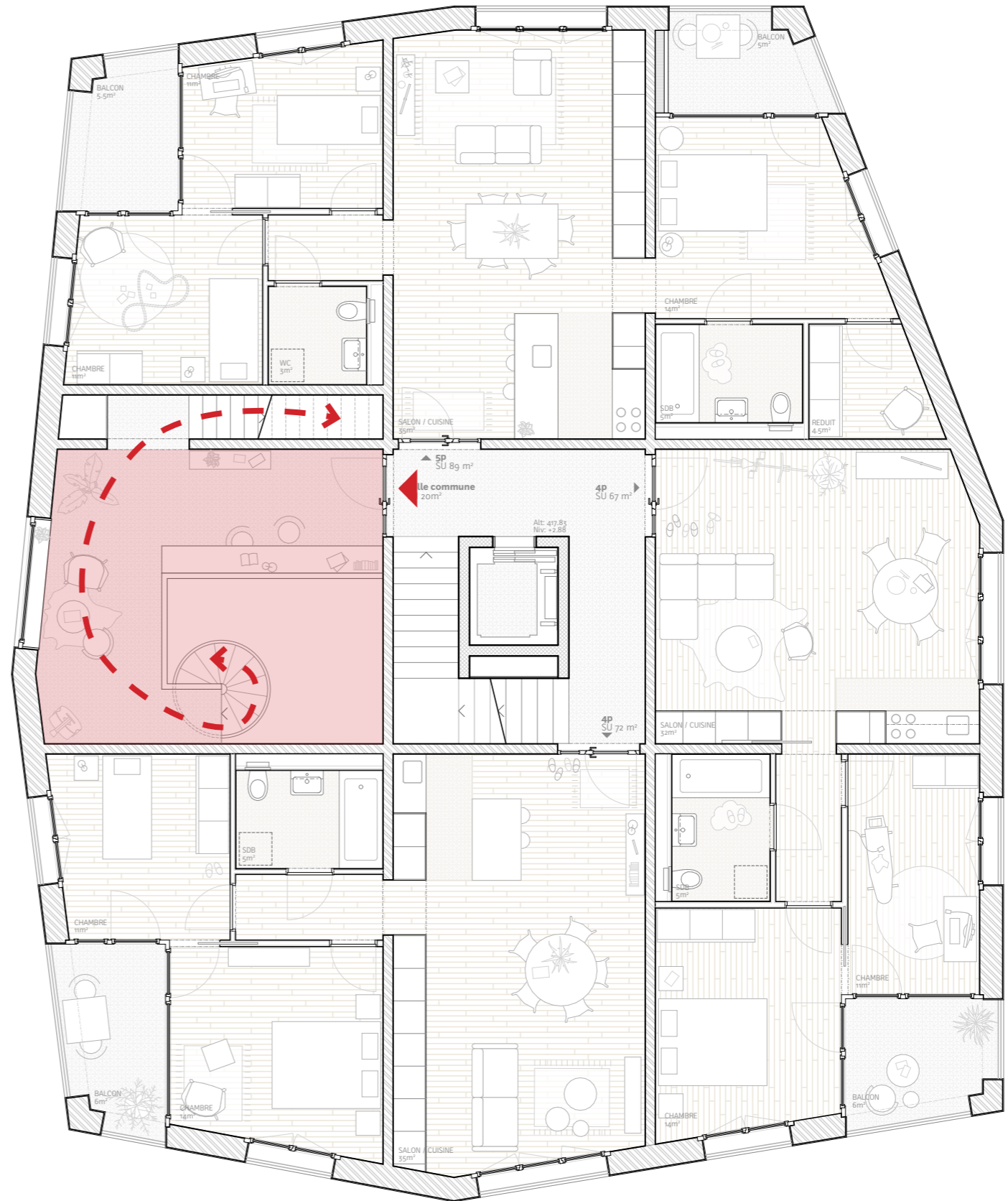


# IMMEUBLE CHEMIN DE LA FONTAINE 7

## RACEME - HABITER ENSEMBLE

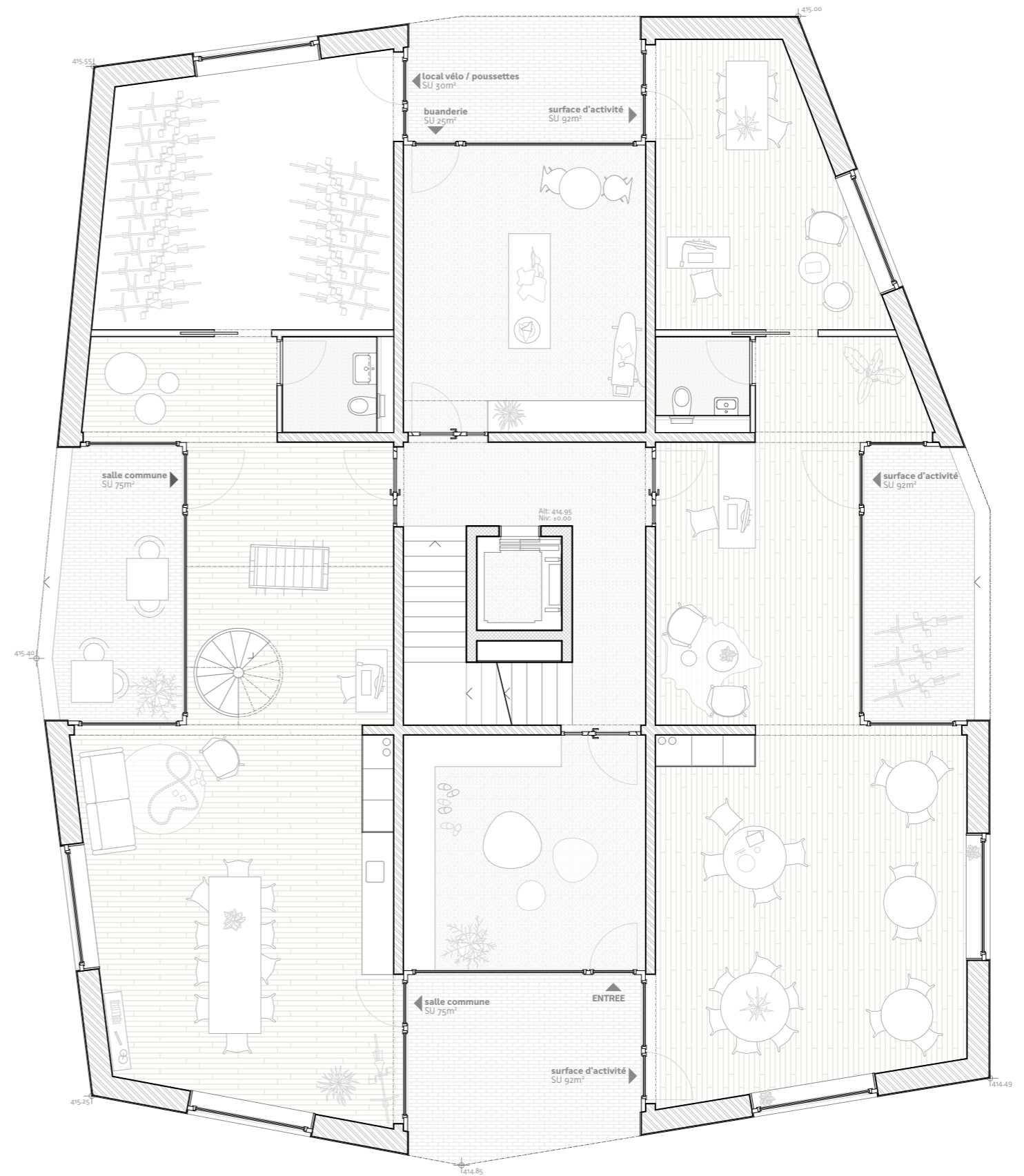
### 1<sup>ER</sup> ETAGE

**LE(S) SALON(S)**





# IMMEUBLE CHEMIN DE LA FONTAINE 7 RACEME - HABITER ENSEMBLE REZ-DE-CHAUSSEE



189cio\_L29\_03\_2022

# IMMEUBLE CHEMIN DE LA FONTAINE 7 RACEME - HABITER ENSEMBLE REZ-DE-CHAUSSEE

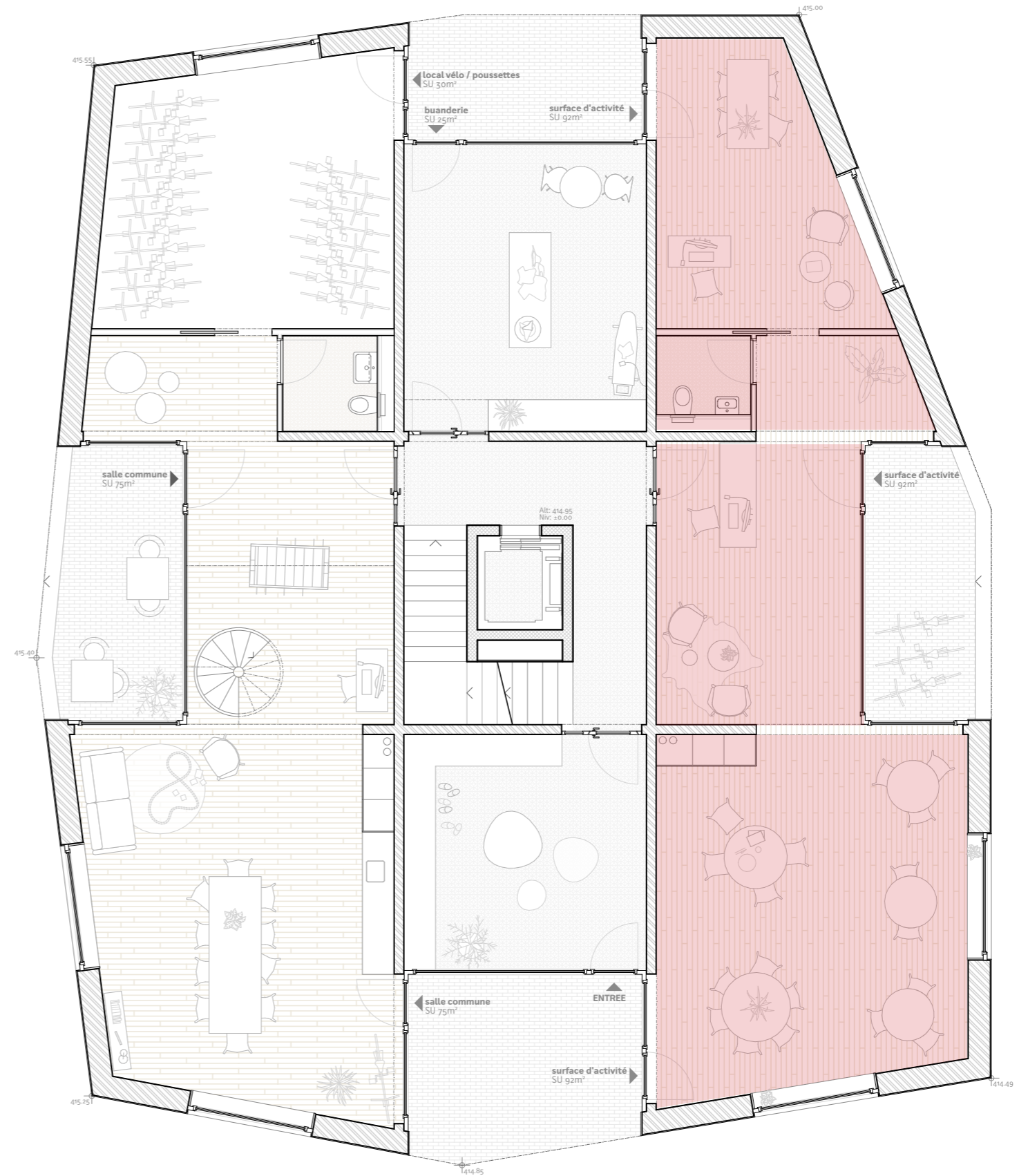
**LE(S) SALON(S)**





# IMMEUBLE CHEMIN DE LA FONTAINE 7 RACEME - HABITER ENSEMBLE REZ-DE-CHAUSSEE

**SURFACE D'ACTIVITE**

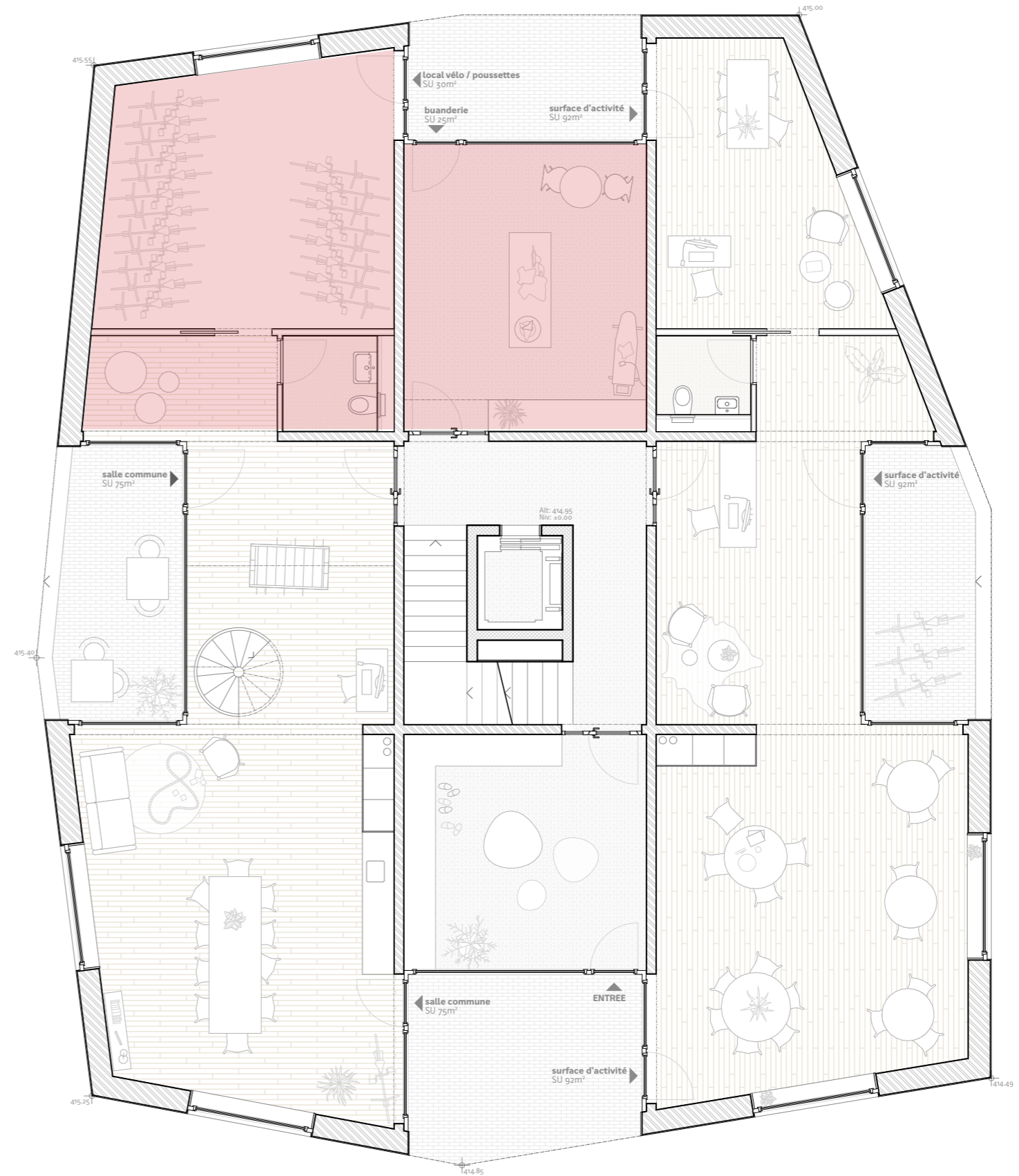


# IMMEUBLE CHEMIN DE LA FONTAINE 7

## RACEME - HABITER ENSEMBLE

### REZ-DE-CHAUSSEE

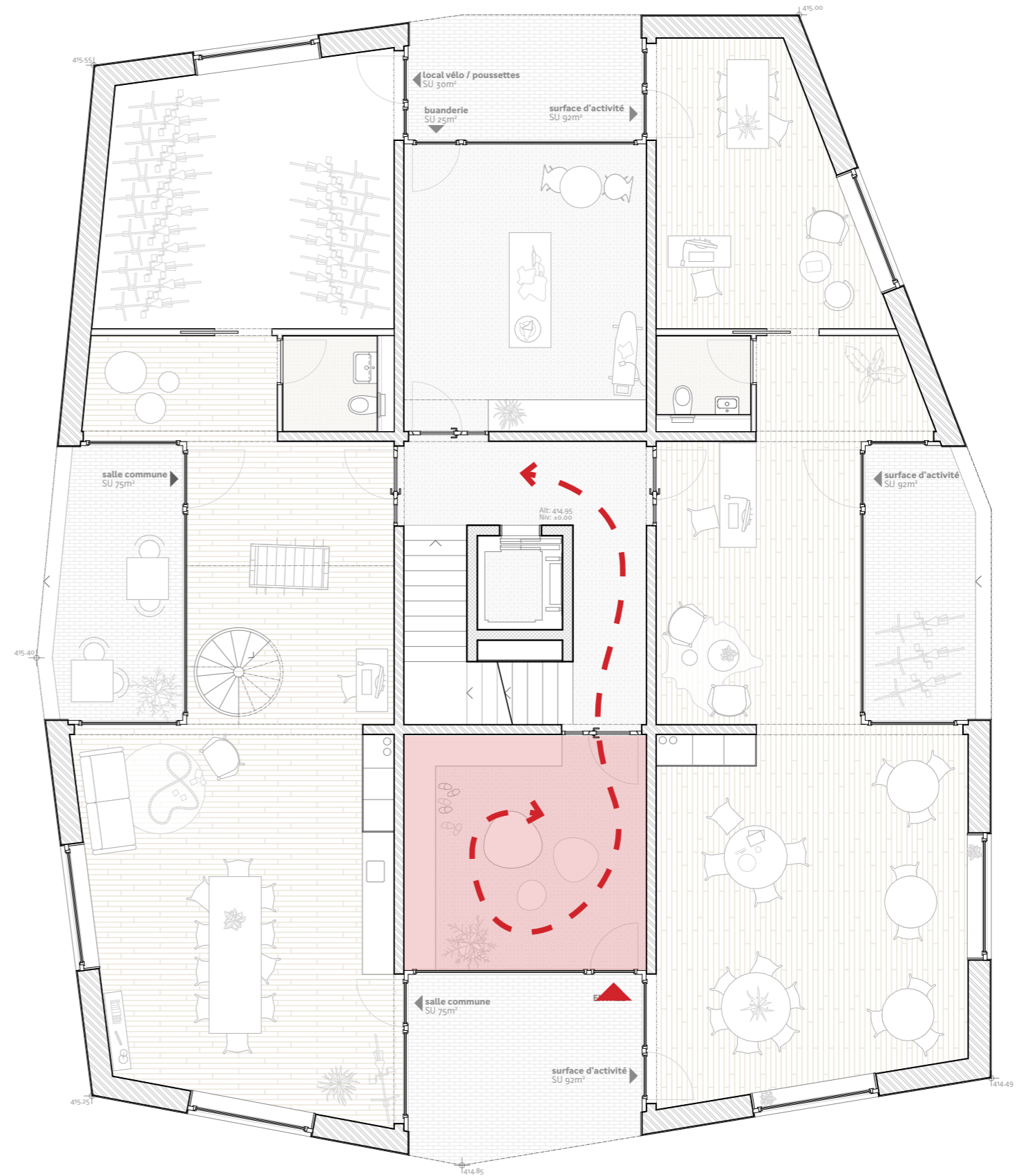
**COMMUNS**





# IMMEUBLE CHEMIN DE LA FONTAINE 7 RACEME - HABITER ENSEMBLE REZ-DE-CHAUSSEE

**L'ENTREE**



**CONTEXTE URBAIN**

**IMMEUBLE CHEMIN DE LA FONTAINE 7**

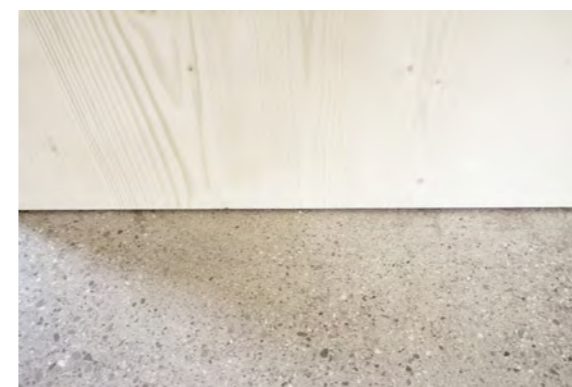
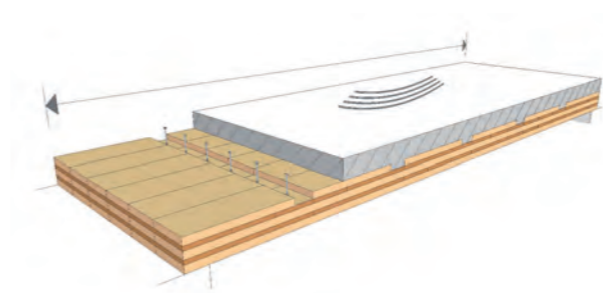
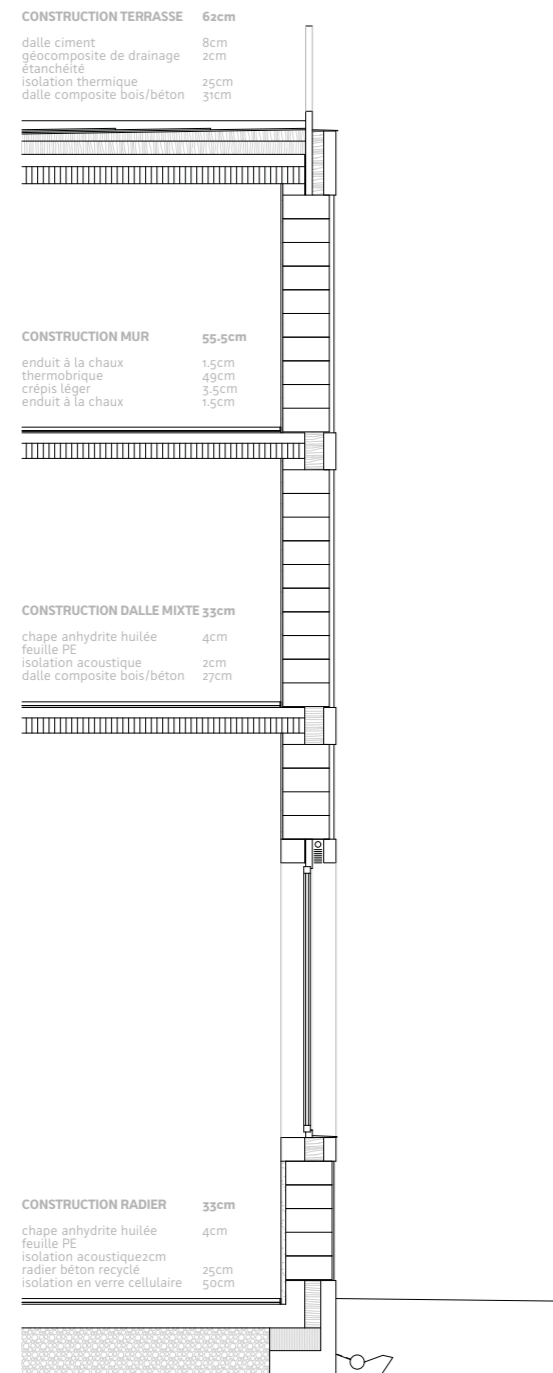
**PHILOSOPHIE CONSTRUCTIVE**

**MAISON PONT-DE-VILLE 20**



# PHILOSOPHIE CONSTRUCTIVE

## BRIQUES THERMIQUES ET DALLES EN BOIS-BETON



**CONTEXTE URBAIN**

**IMMEUBLE CHEMIN DE LA FONTAINE 7**

**PHILOSOPHIE CONSTRUCTIVE**

**MAISON PONT-DE-VILLE 20**



# MAISON PONT-DE-VILLE 20

## SITUATION





# MAISON PONT-DE-VILLE 20

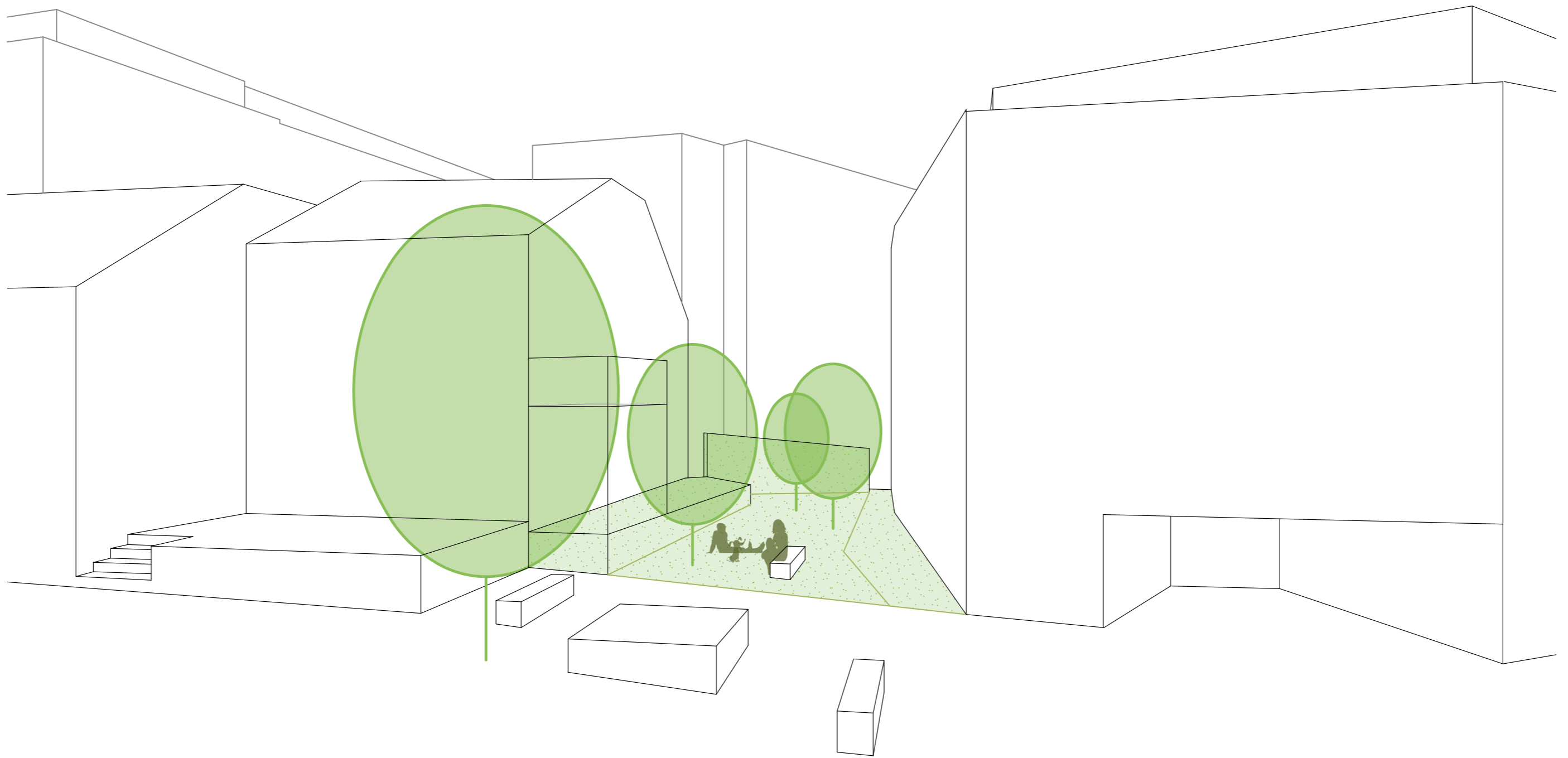
## SITUATION





# MAISON PONT-DE-VILLE 20

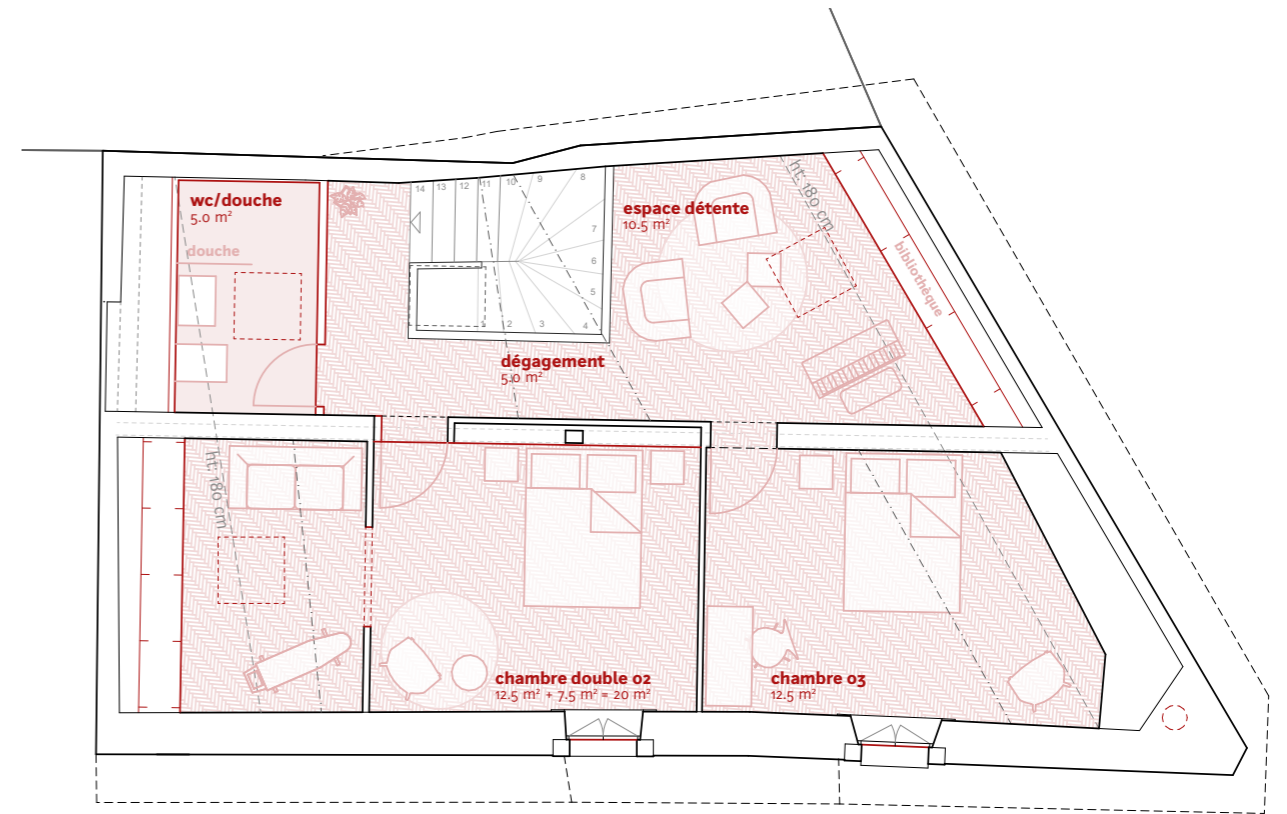
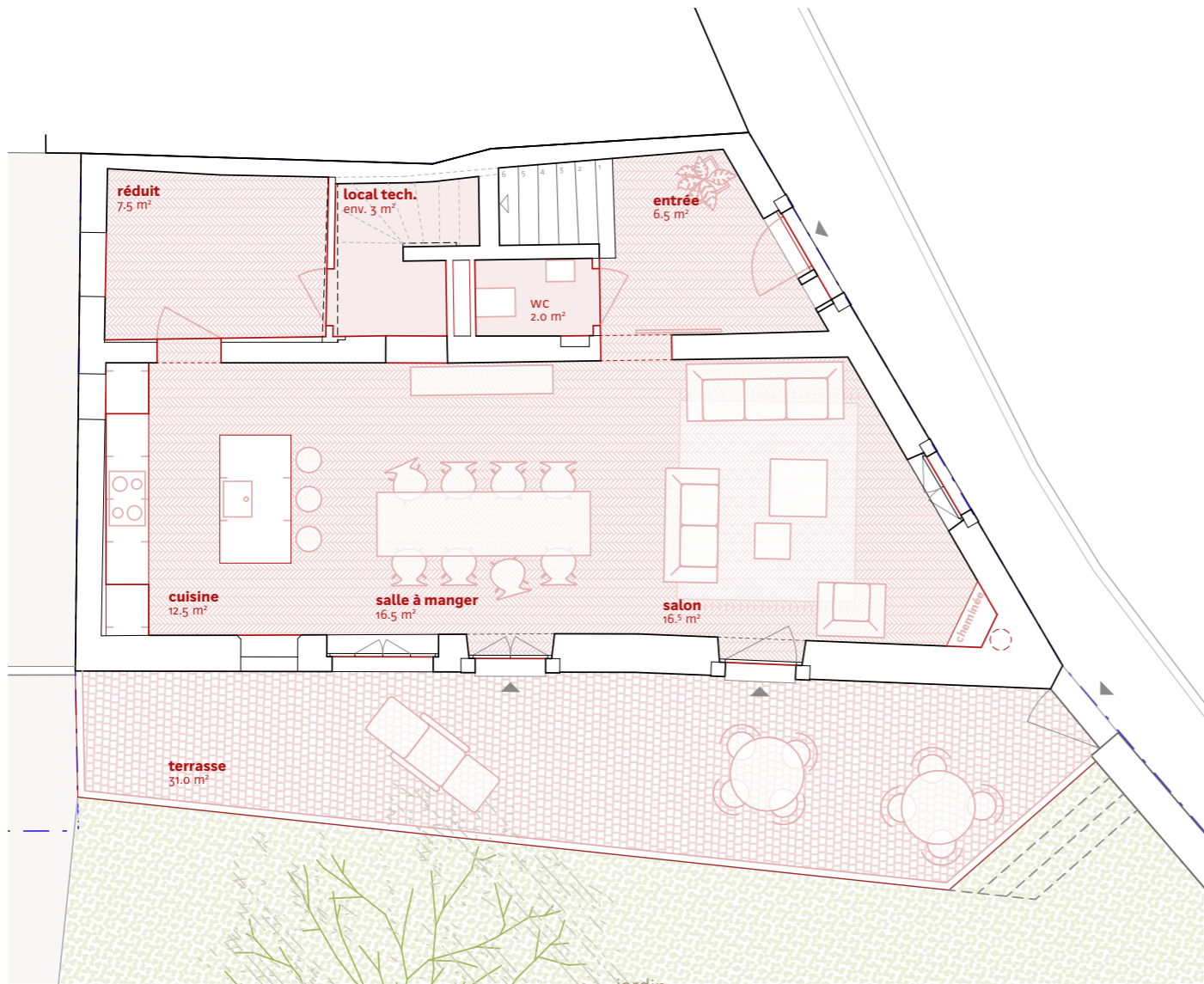
## SITUATION



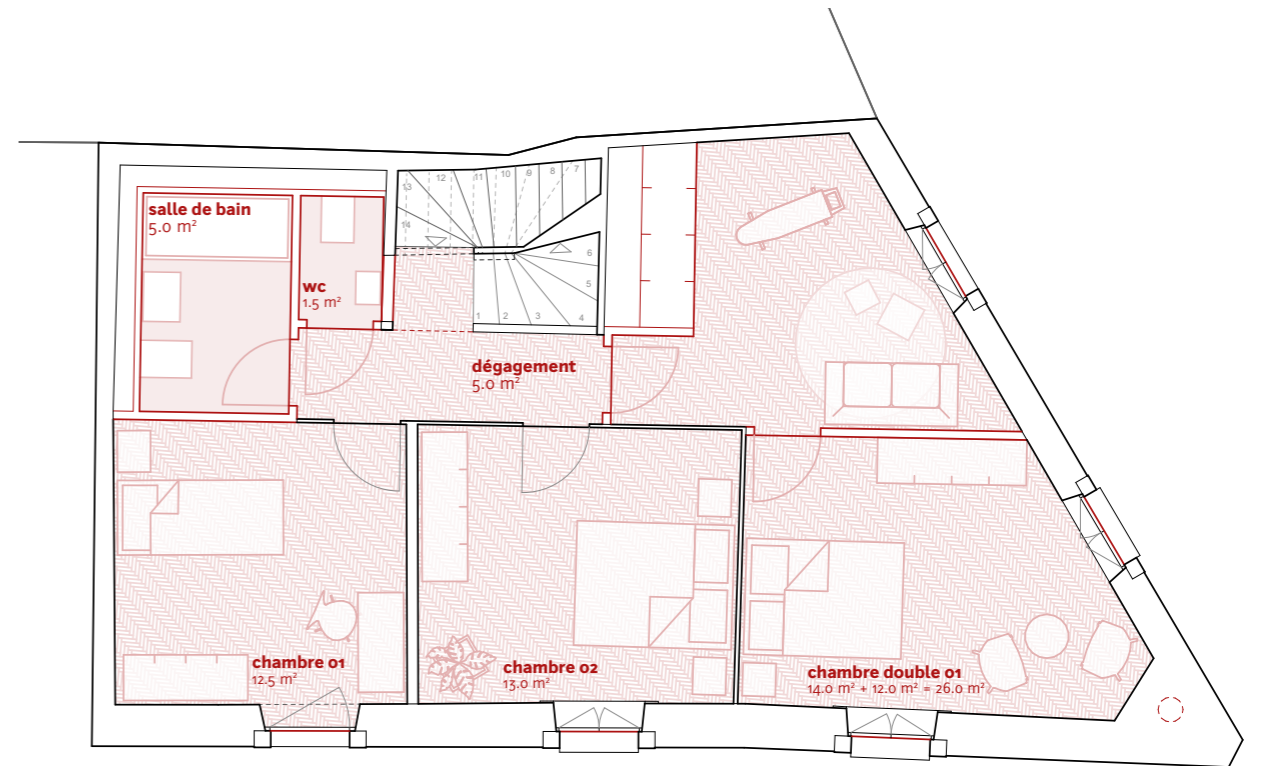
189c10\_19\_03\_2022

# MAISON PONT-DE-VILLE 20 PROJET

10 à 11<sup>PC</sup>



2<sup>E</sup>



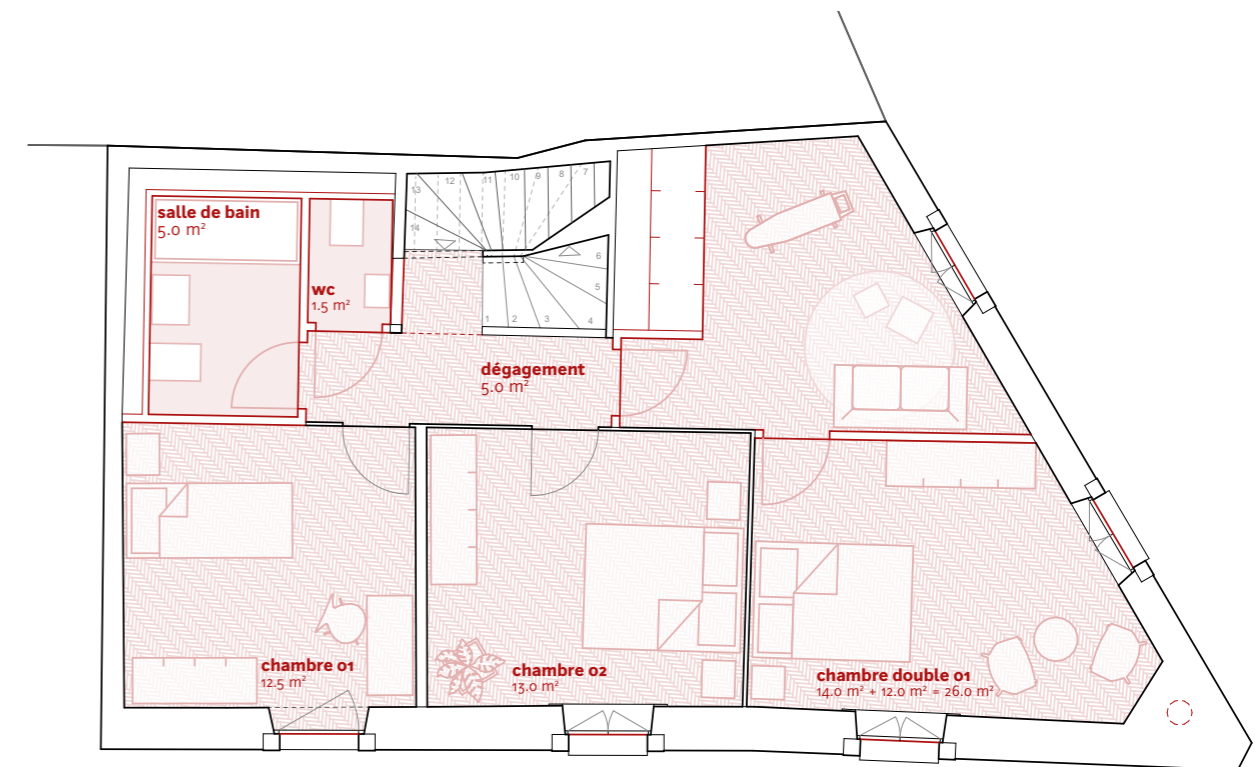
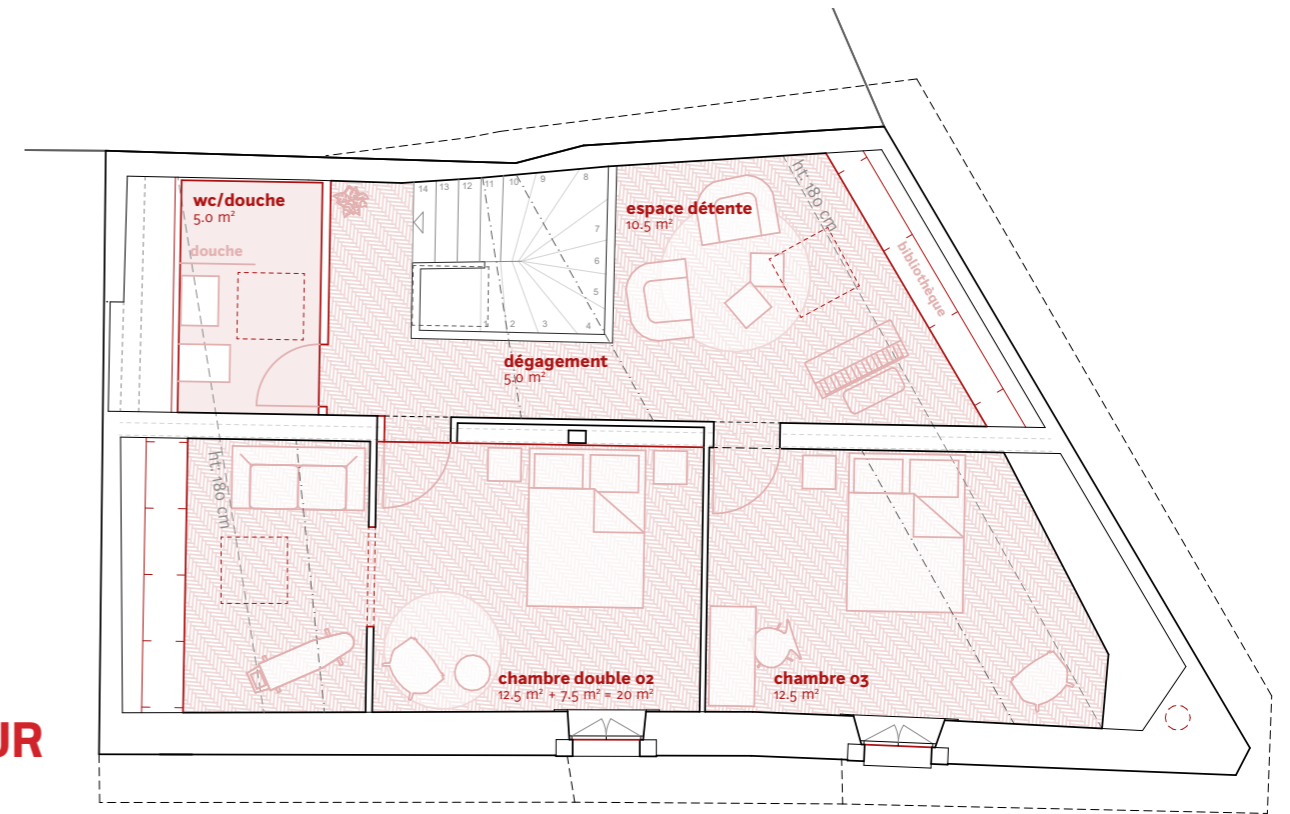
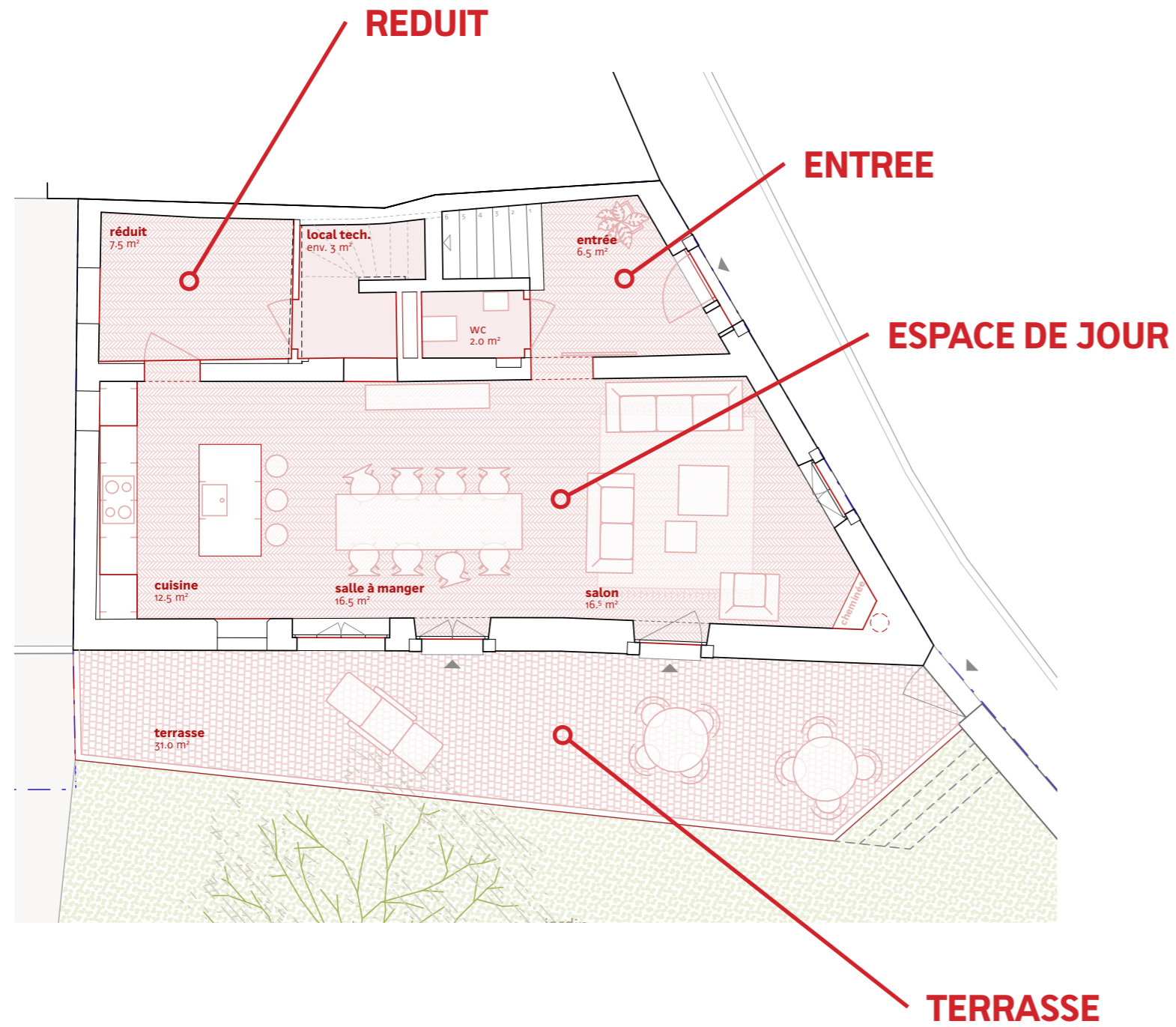
1<sup>ER</sup>

REZ



# MAISON PONT-DE-VILLE 20 PROJET

10 à 11<sup>PC</sup>



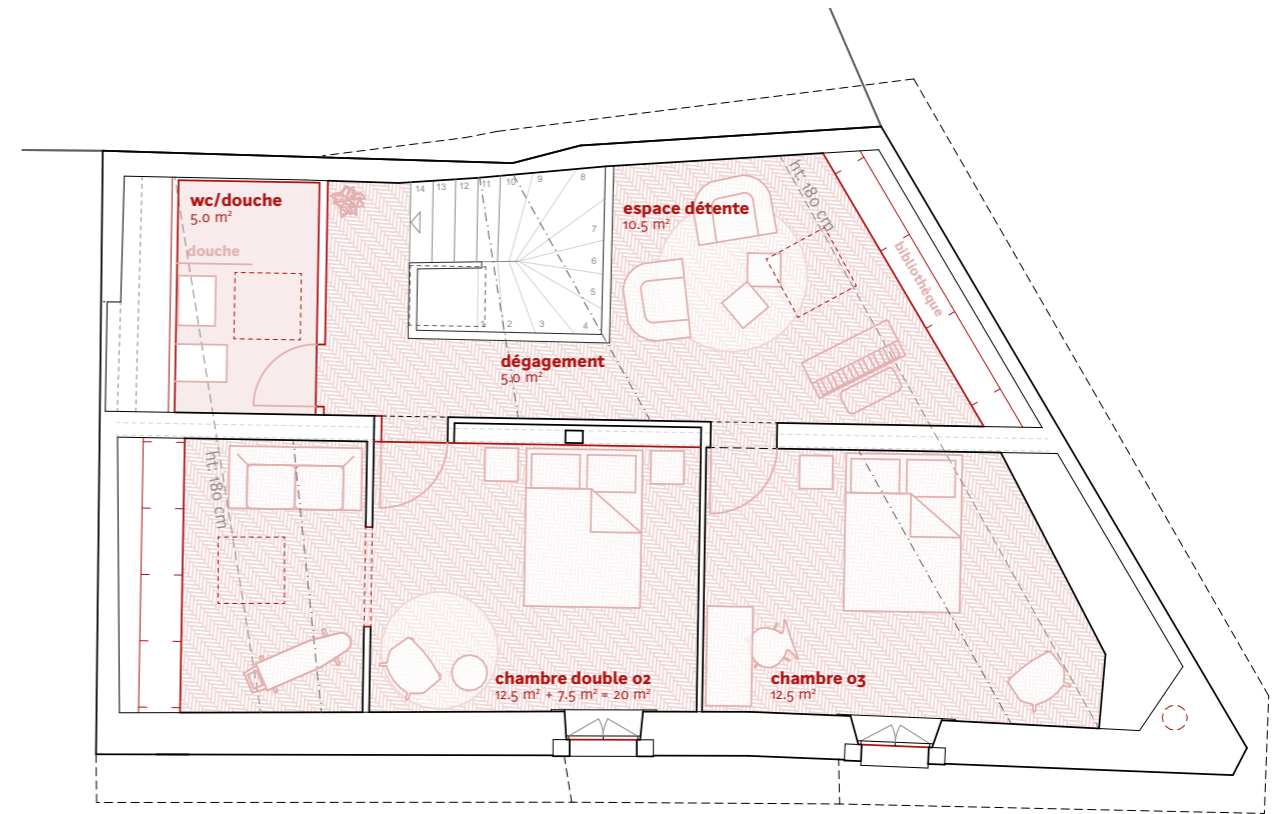
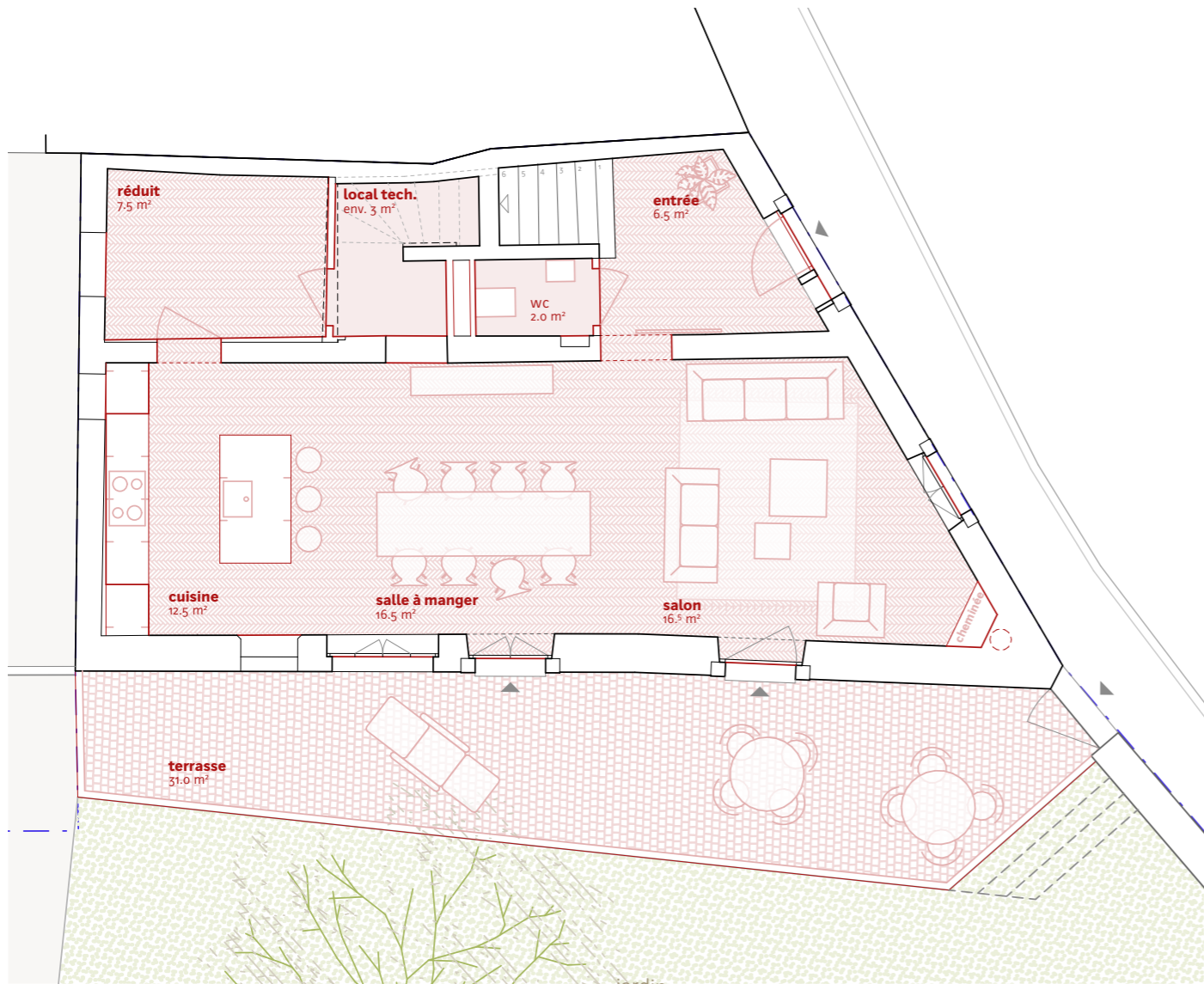
REZ

1<sup>ER</sup>



# MAISON PONT-DE-VILLE 20 PROJET

10 à 11<sup>PC</sup>

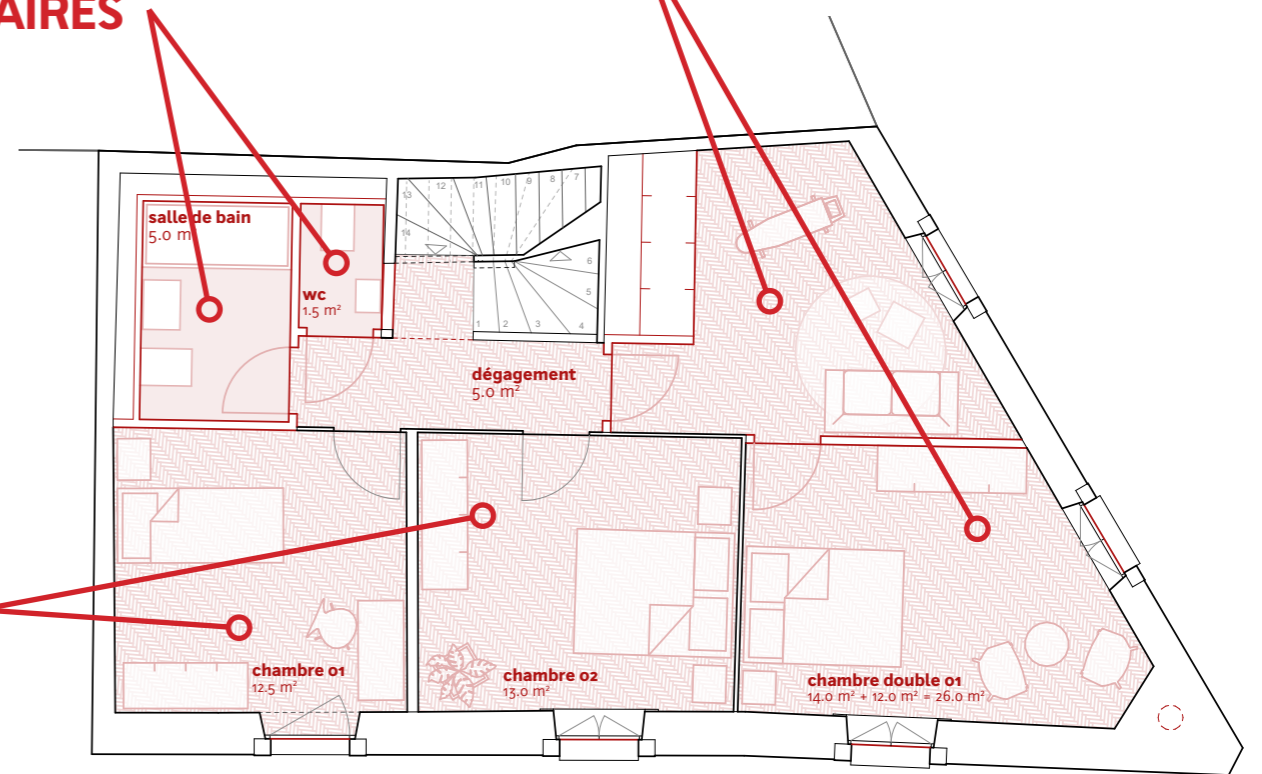


2<sup>E</sup>

SANITAIRES

SUITE 2<sup>P</sup>

CHAMBRES



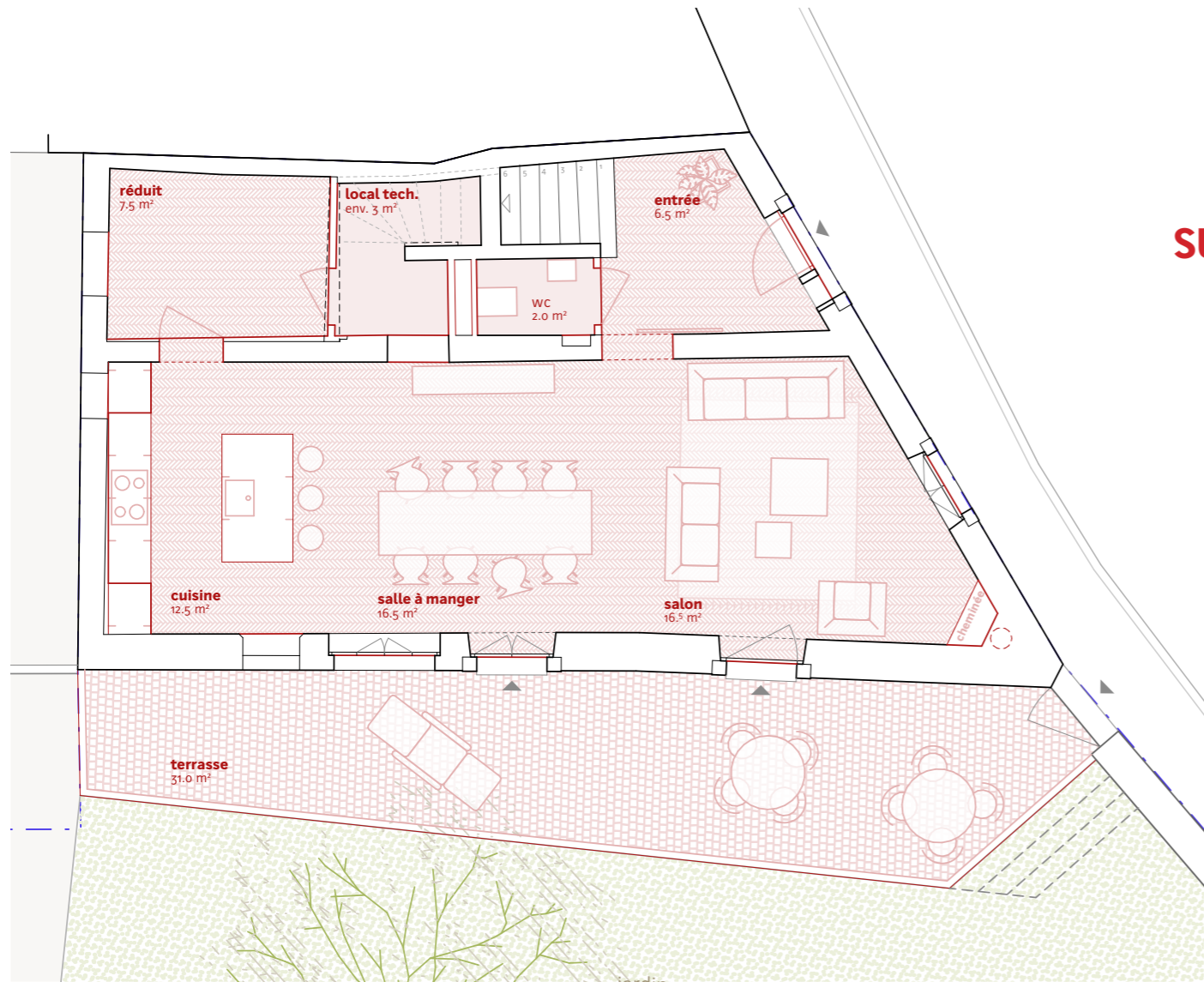
1<sup>ER</sup>

REZ

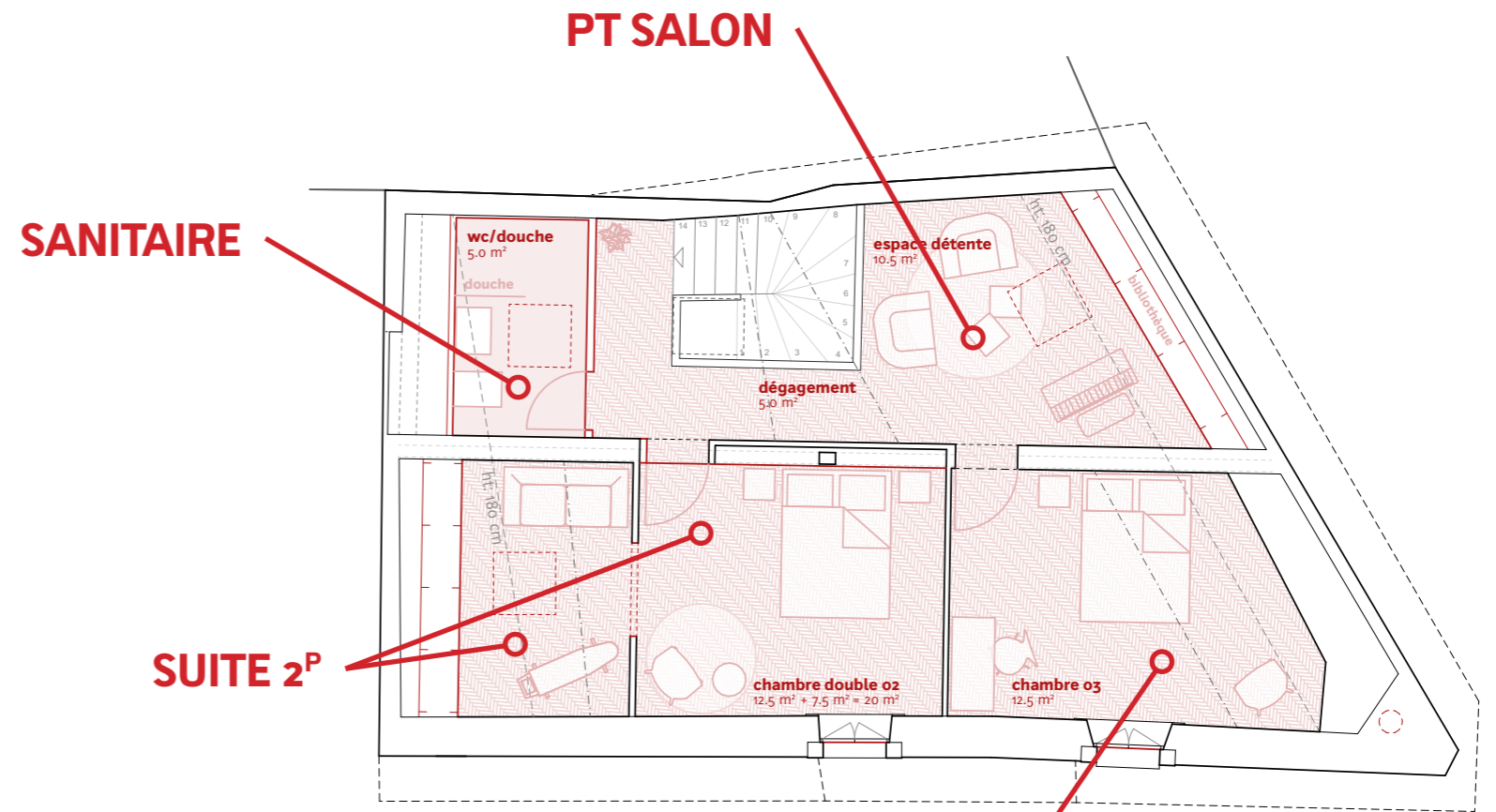


# MAISON PONT-DE-VILLE 20 PROJET

10 à 11<sup>PC</sup>

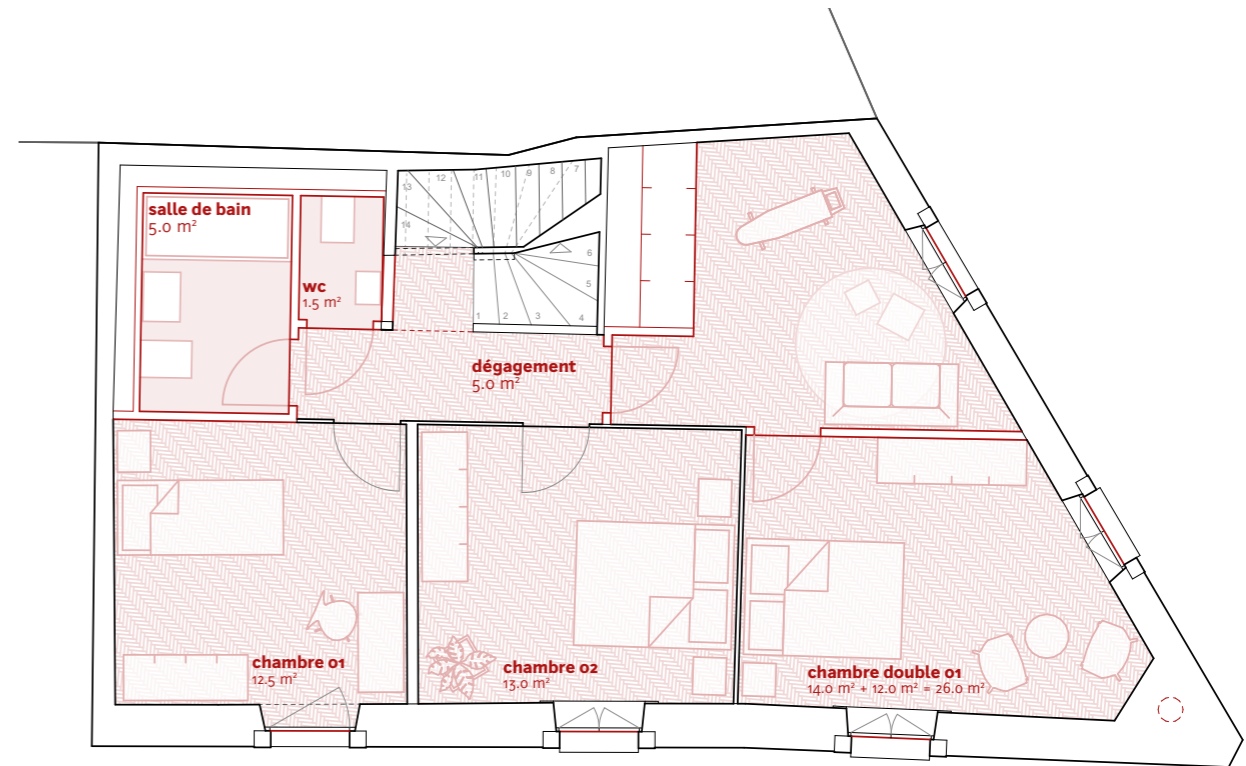


REZ



2<sup>E</sup>

CHAMBRE



1<sup>ER</sup>





**BCRarchitectes**

**MERCI**

